



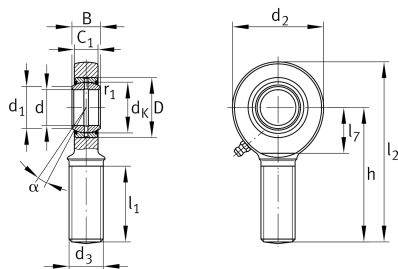
## GAR12-DO

Rod end

Schaeffler ID:  
0066339510000

Rod end with external thread, right hand thread, requiring maintenance, sliding contact surface: steel/steel, DIN ISO 12240-4, dimension series E, type M, open

### Technical information



### Main Dimensions & Performance Data

d	12 mm	Bore diameter bearing
D	22 mm	Outside diameter bearing
B	10 mm	Width inner ring
C <sub>r</sub>	10.800 N	Basic dynamic load rating, radial
C <sub>0r</sub>	30.200 N	Basic static load rating, radial
	77,5 g	Weight

### Dimensions

d <sub>K</sub>	18 mm	Ball diameter
d <sub>1</sub>	14,9 mm	Outer flange diameter inner ring
d <sub>2</sub>	34 mm	Outer eye diameter
d <sub>3</sub>	M12	Thread size
h	54 mm	Shank Length External thread rod
C <sub>1</sub>	8 mm	Width of the rod end
α	11 °	Tilt angle
l <sub>1</sub>	28 mm	Shank Length External thread head
l <sub>2</sub>	71 mm	Total length external thread head
l <sub>7</sub>	18 mm	Distance drilling with/shaft start
G <sub>r</sub>	0,023 - 0,068 mm	Radial Clearance
d <sub>OT</sub>	0 mm	Bore diameter bearing, upper tolerance
d <sub>UT</sub>	-0,008 mm	Bore diameter bearing, lower tolerance
B <sub>OT</sub>	0 mm	Width inner ring, upper tolerance
B <sub>UT</sub>	-0,12 mm	Width inner ring, lower tolerance

### Mounting dimensions

r <sub>1smin</sub>	0,3 mm	Edge Spacing
--------------------	--------	--------------

### Temperature range

T <sub>min</sub>	-60 °C	Operating temperature min.
T <sub>max</sub>	200 °C	Operating temperature max.