



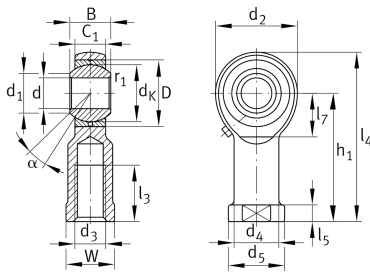
GIKR25-PB

Rod end

Schaeffler ID:
0066350590000

Rod end with internal thread, right hand thread, requiring maintenance, DIN ISO 12240-4. dimension series K, type F, open design

Technical information



Main Dimensions & Performance Data

| | | |
|-----------------|--------------|-----------------------------------|
| d | 25 mm | Bore diameter bearing |
| D | 47 mm | Outside diameter bearing |
| B | 31 mm | Width inner ring |
| C _r | 47.100 N | Basic dynamic load rating, radial |
| C _{0r} | 72.900 N | Basic static load rating, radial |
| G _r | 0 - 0,035 mm | Radial Clearance |
| | 0,73 kg | Weight |

Dimensions

| | | |
|--------------------|----------|----------------------------------------|
| d _K | 42,85 mm | Ball diameter |
| d ₁ | 29,5 mm | Outer flange diameter inner ring |
| d ₂ | 60 mm | Outer eye diameter |
| d ₃ | M24x2 | Thread size |
| d ₄ | 33,5 mm | Shank diameter |
| h ₁ | 94 mm | Shank Length Internal thread head |
| α | 15 ° | Tilt angle |
| l ₃ | 42 mm | Thread length Internal thread |
| l ₄ | 124 mm | Total length internal thread head |
| l ₅ | 12 mm | length rod end shank |
| l ₇ | 32 mm | Distance drilling with/shaft start |
| d ₅ | 42 mm | Shank diameter, large |
| C ₁ | 22 mm | Width of the rod end |
| r _{1smin} | 0,3 mm | Edge Spacing |
| W | 36 mm | Width Across Flat |
| d _{OT} | 0,021 mm | Bore diameter bearing, upper tolerance |
| d _{UT} | 0 mm | Bore diameter bearing, lower tolerance |
| d _T | H7 mm | Bore diameter bearing, tolerance |
| B _{OT} | 0 mm | Width inner ring, upper tolerance |
| B _{UT} | -0,12 mm | Width inner ring, lower tolerance |

Temperature range

| | | |
|------------------|--------|----------------------------|
| T _{min} | -60 °C | Operating temperature min. |
| T _{max} | 250 °C | Operating temperature max. |