



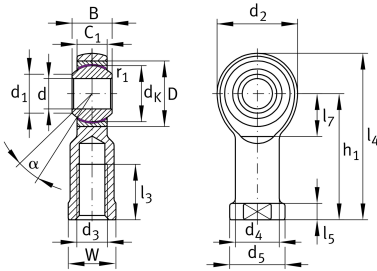
## GIKR20-PW

### Rod end

Schaeffler ID:  
0066350240000

Rod end with internal thread, right hand thread, maintenance-free, sliding layer: PTFE film; brass outer ring, DIN ISO 12240-4, dimension series K, type F, open design

### Technical information



### Main Dimensions & Performance Data

d	20 mm	Bore diameter bearing
D	40 mm	Outside diameter bearing
B	25 mm	Width inner ring
C <sub>r</sub>	56.600 N	Basic dynamic load rating, radial
C <sub>0r</sub>	45.600 N	Basic static load rating, radial
	0,43 kg	Weight

### Dimensions

d <sub>K</sub>	34,925 mm	Ball diameter
d <sub>1</sub>	24,3 mm	Outer flange diameter inner ring
d <sub>2</sub>	50 mm	Outer eye diameter
d <sub>3</sub>	M20x1,5	Thread size
d <sub>4</sub>	27,5 mm	Shank diameter
h <sub>1</sub>	77 mm	Shank Length Internal thread head
C <sub>1</sub>	18 mm	Width of the rod end
α	14 °	Tilt angle
l <sub>3</sub>	33 mm	Thread length Internal thread
l <sub>4</sub>	102 mm	Total length internal thread head
l <sub>5</sub>	10 mm	length rod end shank
l <sub>7</sub>	26 mm	Distance drilling with/shaft start
d <sub>5</sub>	35 mm	Shank diameter, large
W	30 mm	Width Across Flat
G <sub>r</sub>	0 - 0,035 mm	Radial Clearance
d <sub>OT</sub>	0,021 mm	Bore diameter bearing, upper tolerance
d <sub>UT</sub>	0 mm	Bore diameter bearing, lower tolerance
d <sub>T</sub>	H7 mm	Bore diameter bearing, tolerance
B <sub>OT</sub>	0 mm	Width inner ring, upper tolerance
B <sub>UT</sub>	-0,12 mm	Width inner ring, lower tolerance

**Mounting dimensions**

---

$r_{1smin}$	0,3 mm	Edge Spacing
-------------	--------	--------------

**Temperature range**

---

$T_{min}$	-50 °C	Operating temperature min.
$T_{max}$	200 °C	Operating temperature max.