



GIR15-UK

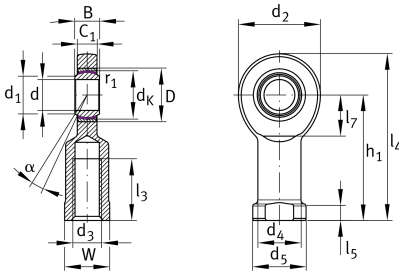
Rod end

Schaeffler ID:
0066354150000

Rod end with internal thread, maintenance-free, sliding layer: PTFE composite, DIN ISO 12240-4, dimension series E, type F, inner ring curved surface with hard chromium coating, open design, left hand thread



Technical information



Main Dimensions & Performance Data

| | | |
|-----------------|----------|-----------------------------------|
| d | 15 mm | Bore diameter bearing |
| D | 26 mm | Outside diameter bearing |
| B | 12 mm | Width inner ring |
| C _r | 17.800 N | Basic dynamic load rating, radial |
| C _{0r} | 44.800 N | Basic static load rating, radial |
| | 0,177 kg | Weight |

Dimensions

| | | |
|-----------------|-------------|--|
| d _K | 22 mm | Ball diameter |
| d ₁ | 18,4 mm | Outer flange diameter inner ring |
| d ₂ | 40 mm | Outer eye diameter |
| d ₃ | M14 | Thread size |
| d ₄ | 21 mm | Shank diameter |
| h ₁ | 61 mm | Shank Length Internal thread head |
| C ₁ | 10 mm | Width of the rod end |
| α | 8 ° | Tilt angle |
| l ₃ | 30 mm | Thread length Internal thread |
| l ₄ | 81 mm | Total length internal thread head |
| l ₅ | 8 mm | length rod end shank |
| l ₇ | 20 mm | Distance drilling with/shaft start |
| d ₅ | 26 mm | Shank diameter, large |
| W | 22 mm | Width Across Flat |
| G _r | 0 - 0,04 mm | Radial Clearance |
| d _{OT} | 0 mm | Bore diameter bearing, upper tolerance |
| d _{UT} | -0,008 mm | Bore diameter bearing, lower tolerance |
| B _{OT} | 0 mm | Width inner ring, upper tolerance |
| B _{UT} | -0,12 mm | Width inner ring, lower tolerance |

Mounting dimensions

| | | |
|--------------------|--------|--------------|
| r _{1smin} | 0,3 mm | Edge Spacing |
|--------------------|--------|--------------|

Temperature range

| | | |
|------------------|--------|----------------------------|
| T _{min} | -50 °C | Operating temperature min. |
| T _{max} | 200 °C | Operating temperature max. |