

## ★ RATR20-XL

Flanged housing unit

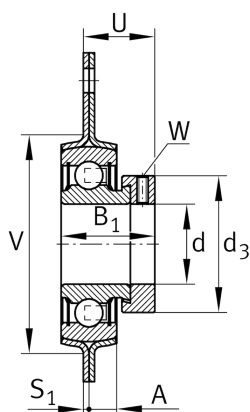
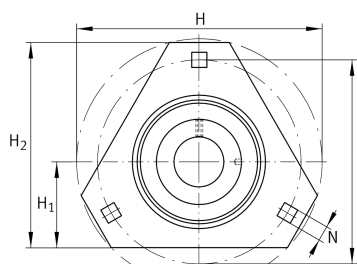
Schaeffler ID:  
0008287260000

★ Preferred product

Housing units RATR, three-bolt flanged housing units, sheet steel, eccentric locking collar, P seals

X-life

### Technical information



### Main Dimensions & Performance Data

d	20 mm	Bore diameter
H <sub>2</sub>	76,2 mm	Height flange
H	90 mm	Height flange
H	90,5 mm	Flange width
U	25,5 mm	Total height unit
C <sub>r</sub>	13.600 N	Basic dynamic load rating, radial
C <sub>0r</sub>	6.600 N	Basic static load rating, radial
C <sub>ur</sub>	345 N	Fatigue load limit, radial
C <sub>0rG</sub>	3.200 N	Load carrying capacity (housing)
C <sub>g</sub>	3.200 N	Load carrying capacity (housing)
	0,28 kg	Weight

### Dimensions

A	8 mm	Height housing
H <sub>1</sub>	33,3 mm	Distance shaft axis
S	2 mm	Thickness of flange
V	55 mm	Shoulder diameter housing

### Mounting dimensions

J	71,5 mm	Distance fixing bore
J	71,5 mm	Pitch circle diameter (holes)
N	8,7 mm	Fixing square
n	3	Number of screwing holes

### Additional information

	2	Number of housings
	FLAN47-MSTR	Housing
	RAE20-XL-NPP-B	Bearing designation