

★ **PASE15-XL**

Plummer block housing unit

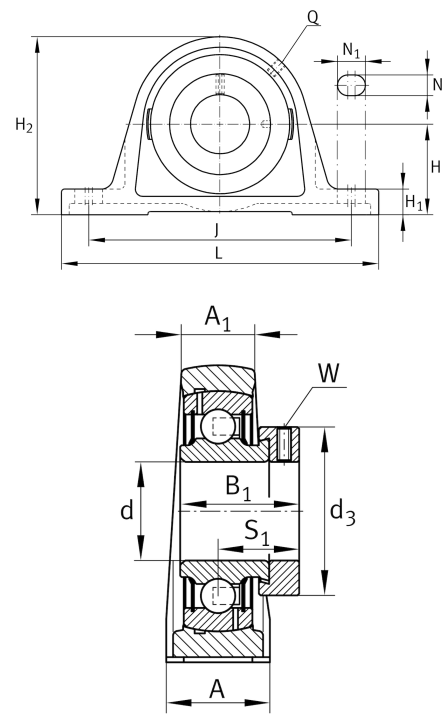
Schaeffler ID:
0008278510000

★ Preferred product

Plummer block housing units PASE, cast iron housing, radial insert ball bearing with eccentric locking collar, P seals

X-life

Technical information



Main Dimensions & Performance Data

d	15 mm	Bore diameter
L	125 mm	Length total
H ₂	57 mm	Height
	0,44 kg	Weight

Dimensions

H	30,2 mm	Distance shaft axis
A	30 mm	Width (base)
A ₁	18 mm	Width (head)
H ₁	10 mm	Height (base)
Q	M6	Connection thread lubrication

Mounting dimensions

J	95 mm	Distance fixing bore
N	11 mm	Width (slot)
N ₁	19 mm	Length (slot)

Additional information

ASE03	Housing
GRAE15-XL-NPP-B	Bearing designation