

★ **PASE20-XL-N**

Plummer block housing unit

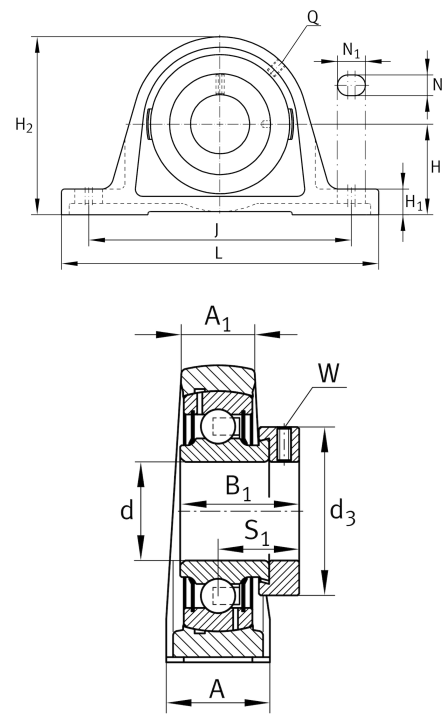
Schaeffler ID:  
0096411810000

★ Preferred product

Plummer block housing units PASE, cast iron housing, radial insert ball bearing with eccentric locking collar, P seals

**X-life**

Technical information



Main Dimensions & Performance Data

d	20 mm	Bore diameter
L	130 mm	Length total
H <sub>2</sub>	64 mm	Height
	0,6 kg	Weight

Dimensions

H	33,3 mm	Distance shaft axis
A	32 mm	Width (base)
A <sub>1</sub>	19 mm	Width (head)
H <sub>1</sub>	14,5 mm	Height (base)
Q	M6	Connection thread lubrication

Mounting dimensions

J	97,5 mm	Distance fixing bore
N	11 mm	Width (slot)
N <sub>1</sub>	19 mm	Length (slot)

Additional information

ASE04	Housing
GRAE20-XL-NPP-B	Bearing designation
KASK04	Protecting cap