

★ **PASE55-XL**

Plummer block housing unit

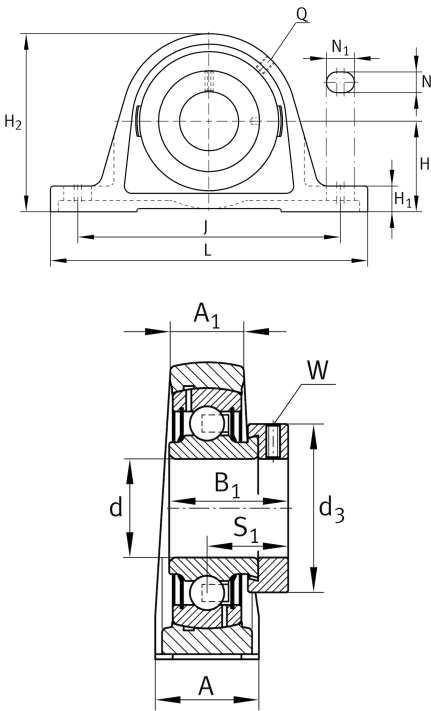
Schaeffler ID:
0009723980000

Plummer block housing units PASE, cast iron housing, radial insert ball bearing with eccentric locking collar, P seals

★ Preferred product

X-life

Technical information



Main Dimensions & Performance Data

d	55 mm	Bore diameter
L	222 mm	Length total
H ₂	124,5 mm	Height
	3,2 kg	Weight

Dimensions

H	63,5 mm	Distance shaft axis
A	60 mm	Width (base)
A ₁	35 mm	Width (head)
H ₁	22,5 mm	Height (base)
Q	M6	Connection thread lubrication

Mounting dimensions

J	176 mm	Distance fixing bore
N	18 mm	Width (slot)
N ₁	30 mm	Length (slot)

Additional information

ASE11	Housing
GRAE55-XL-NPP-B	Bearing designation