

PASE25-XL-N-FA125

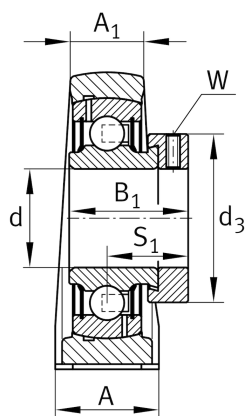
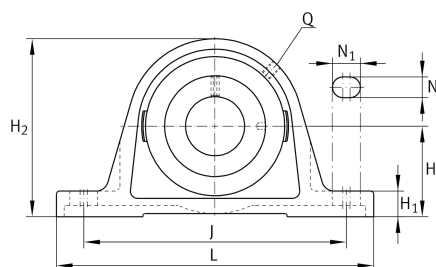
Plummer block housing unit

Schaeffler ID:
0076462320000

Plummer block housing units PASE..-FA125, cast iron housing, radial insert ball bearing with eccentric locking collar, P seals, with anti-corrosion protection

X-life

Technical information



Main Dimensions & Performance Data

d	25 mm	Bore diameter
L	130 mm	Length total
H ₂	70 mm	Height
	0,7 kg	Weight

Dimensions

H	36,5 mm	Distance shaft axis
	ASE05-FA125	Housing
	GRAE25-XL-NPP-B-FA125	Bearing designation
A	36 mm	Width (base)
	KASK05	Protecting cap
A ₁	21 mm	Width (head)
H ₁	14,5 mm	Height (base)
B ₁	31 mm	Locking collar total width
S ₁	23,5 mm	Distance of raceway to locking collar
Q	M6	Connection thread lubrication

Mounting dimensions

J	102,5 mm	Distance fixing bore
N	11 mm	Width (slot)
N ₁	19 mm	Length (slot)