

PASEY12-XL

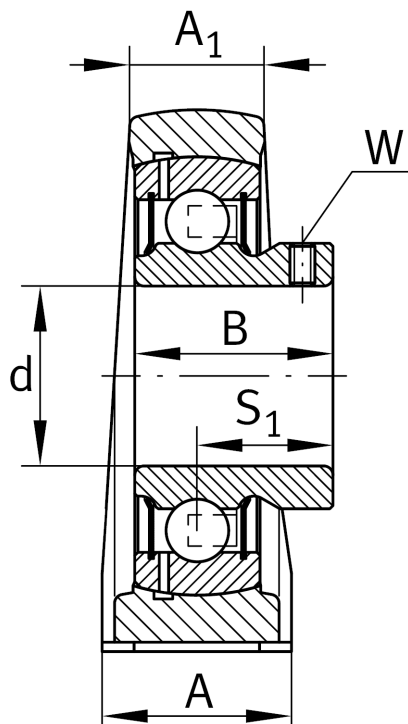
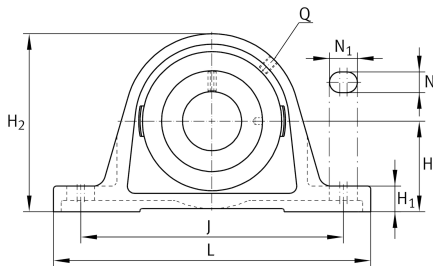
Plummer block housing unit

Schaeffler ID:
0009492480000

Plummer block housing units PASEY, cast iron housing, radial insert ball bearing with grub screws in inner ring, P seals

X-life

Technical information



Main Dimensions & Performance Data

d	12 mm	Bore diameter
L	125 mm	Length total
H ₂	57 mm	Height
	0,42 kg	Weight

Dimensions

H	30,2 mm	Distance shaft axis
	ASE03	Housing
	GAY12-XL-NPP-B	Bearing designation
A	30 mm	Width (base)
A ₁	18 mm	Width (head)
H ₁	10 mm	Height (base)
B	22 mm	Width
S ₁	16 mm	Distance of raceway to locking collar
Q	M6	Connection thread lubrication

Mounting dimensions

J	95 mm	Distance fixing bore
N	11 mm	Width (slot)
N ₁	19 mm	Length (slot)