

★ RASEY15-XL

Plummer block housing unit

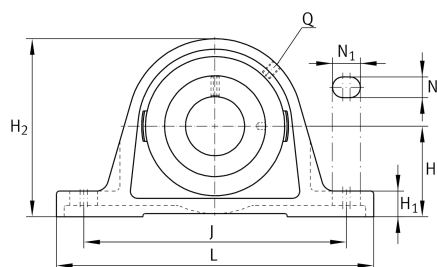
Schaeffler ID:
0009733190000

Plummer block housing units RASEY, cast iron housing, radial insert ball bearing with grub screws in inner ring, R seals

★ Preferred product

X-life

Technical information



Main Dimensions & Performance Data

| | | |
|----------------|---------|---------------|
| d | 15 mm | Bore diameter |
| L | 125 mm | Length total |
| H ₂ | 57 mm | Height |
| | 0,42 kg | Weight |

Dimensions

| | | |
|----------------|---------|-------------------------------|
| H | 30,2 mm | Distance shaft axis |
| A | 30 mm | Width (base) |
| A ₁ | 18 mm | Width (head) |
| H ₁ | 10 mm | Height (base) |
| Q | M6 | Connection thread lubrication |

Mounting dimensions

| | | |
|----------------|-------|----------------------|
| J | 95 mm | Distance fixing bore |
| N | 11 mm | Width (slot) |
| N ₁ | 19 mm | Length (slot) |

Additional information

| | |
|----------------|---------------------|
| ASE03 | Housing |
| GYE15-XL-KRR-B | Bearing designation |

