

## TASE55-XL

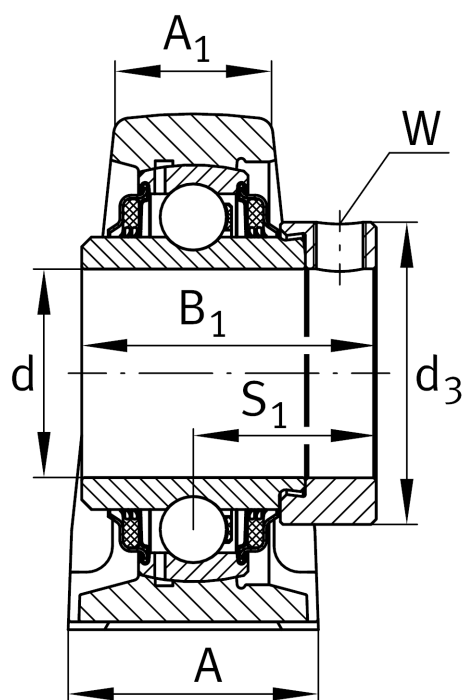
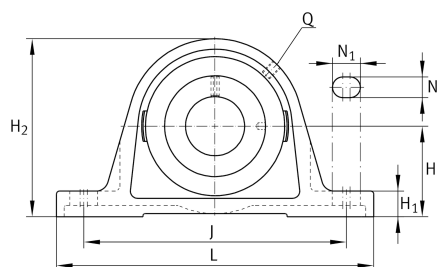
Plummer block housing unit

Schaeffler ID:  
0009476010000

Plummer block housing units TASE, cast iron housing, radial insert ball bearing with eccentric locking collar, T seals

X-life

### Technical information



### Main Dimensions & Performance Data

d	55 mm	Bore diameter
L	222 mm	Length total
H <sub>2</sub>	124,5 mm	Height
	3,51 kg	Weight

### Dimensions

H	63,5 mm	Distance shaft axis
	ASE11	Housing
	GE55-XL-KTT-B	Bearing designation
A	60 mm	Width (base)
A <sub>1</sub>	35 mm	Width (head)
H <sub>1</sub>	22,5 mm	Height (base)
B <sub>1</sub>	71,4 mm	Locking collar total width
S <sub>1</sub>	43,6 mm	Distance of raceway to locking collar
Q	M6	Connection thread lubrication

### Mounting dimensions

J	176 mm	Distance fixing bore
N	18 mm	Width (slot)
N <sub>1</sub>	30 mm	Length (slot)