

FAG

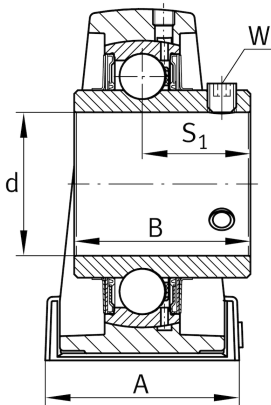
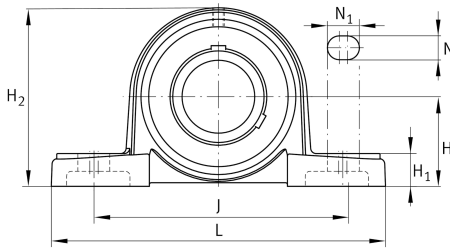
UCP209

Plummer block housing unit

Schaeffler ID:
0808221340000

Plummer block housing units UCP, cast iron housing, with long base, radial insert ball bearing with grub screws in inner ring, RSR seals

Technical information

**Main Dimensions & Performance Data**

d	45 mm	Bore diameter
L	190 mm	Length total
H ₂	106 mm	Height
	2,291 kg	Weight

Dimensions

H	54 mm	Distance shaft axis
	P209	Housing
	UC209	Bearing designation
A	54 mm	Width (base)
H ₁	20 mm	Height (base)
B	49,2 mm	Width
S ₁	30,2 mm	Distance of raceway to locking collar
Q	M6	Connection thread lubrication

Mounting dimensions

J	146 mm	Distance fixing bore
N	17 mm	Width (slot)
N ₁	21 mm	Length (slot)