

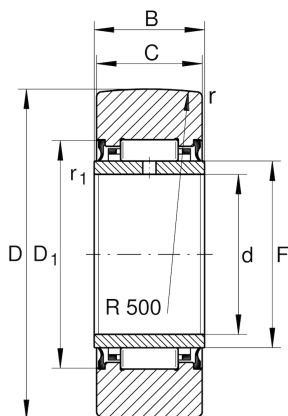
NA2206-2RSR

Yoke type track roller

Schaeffler ID:
0000277150000

Yoke type track rollers NA22...-2RSR,
without axial guidance, lip seals on both
sides

Technical information



Main Dimensions & Performance Data

D	62 mm	Outside diameter
F	35 mm	Raceway diameter inner ring
C	19,8 mm	Width, outer ring
$C_{r w}$	17.000 N	Basic dynamic load rating, radial
$C_{0 r w}$	26.500 N	Basic static load rating, radial
$C_{u r w}$	3.600 N	Fatigue load limit, radial
$n_{D G}$	1.400 1/min	Speed on permanent grease lubrication
	0,003 kg	Weight

Dimensions

d	30 mm	Bore diameter
B	20 mm	Width, inner ring
$D_{1 \min}$	43 mm	Minimum mounting dimension
r_{\min}	1 mm	Minimum chamfer dimension
$r_{1 \min}$	0,3 mm	Minimum chamfer dimension
R	500 mm	Radius of outer ring outside profile