

## ★ E40-XL-KLL

Radial insert ball bearing

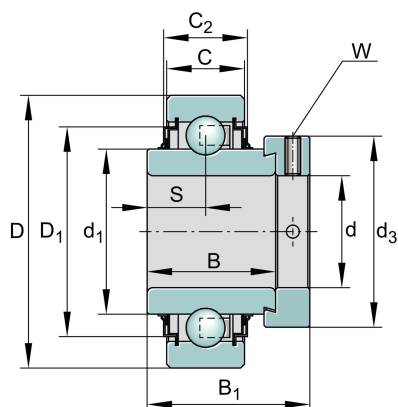
Schaeffler ID:  
0008522010000

★ Preferred product

Radial insert ball bearings E..-KLL, cylindrical outer ring, location by eccentric locking collar, L seals on both sides

X-life

### Technical information



#### Main Dimensions & Performance Data

d	40 mm	Bore diameter
D	80 mm	Outside diameter
B	42,9 mm	Width
B <sub>1</sub>	56,5 mm	Locking collar total width
C <sub>r</sub>	34.500 N	Basic dynamic load rating, radial
C <sub>0r</sub>	19.800 N	Basic static load rating, radial
C <sub>ur</sub>	840 N	Fatigue load limit, radial
	0,76 kg	Weight

#### Dimensions

C	21 mm	Width, outer ring
C <sub>2</sub>	28,1 mm	Sealing total width
S	21,4 mm	Distance raceway
d <sub>1</sub>	52,3 mm	Rib diameter inner ring
D <sub>1</sub>	68,3 mm	Outside diameter seal
d <sub>3</sub>	58 mm	Outside diameter locking collar/locknut
W	5 mm	Width of flats

#### Calculation factors

f <sub>0</sub>	13,6	Calculation factor
----------------	------	--------------------