



★ MSTU30-XL

Take-up housing unit

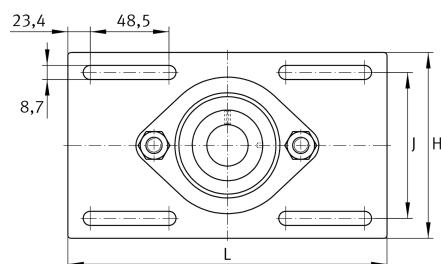
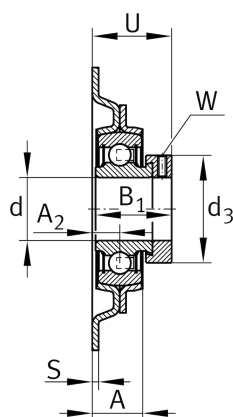
Schaeffler ID:
0008293070000

★ Preferred product

Take-up housing units MSTU, sheet steel housing, radial insert ball bearing with eccentric locking collar, P seals, with relubrication facility

X-life

Technical information



Main Dimensions & Performance Data

d	30 mm	Bore diameter
L	203,2 mm	Length total
H	114,3 mm	Height flange
C _{0rG}	3.900 N	Load carrying capacity (housing)
U	37,8 mm	Total height unit
	0,84 kg	Weight

Dimensions

A	21,1 mm	Height housing
A ₂	12,1 mm	Distance raceway
S	2,5 mm	Thickness of flange

Mounting dimensions

J	89,2 mm	Distance fixing bore
---	---------	----------------------

Additional information

GEH62-MSTU	Housing
RAE30-XL-NPP-B	Bearing designation