



## ★ RTUEO80-XL

Take-up housing unit

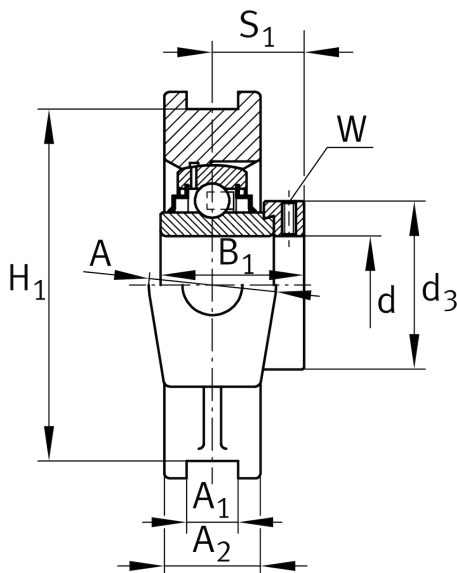
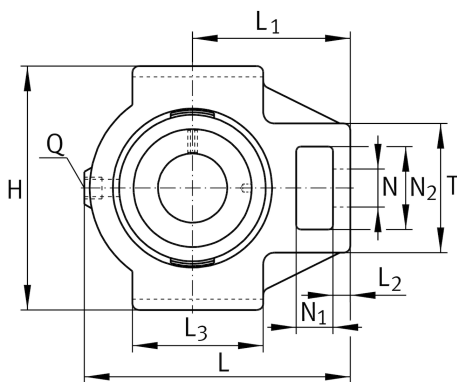
Schaeffler ID:  
0008840570000

★ Preferred product

Take-up housing units RTUEO, cast iron housing, radial insert ball bearing with eccentric locking collar, heavy series, R seals

X-life

### Technical information



### Main Dimensions & Performance Data

|   |          |               |
|---|----------|---------------|
| d | 80 mm    | Bore diameter |
| H | 230 mm   | Height        |
| L | 282 mm   | Length total  |
|   | 16,17 kg | Weight        |

### Dimensions

|                |        |                               |
|----------------|--------|-------------------------------|
| L <sub>1</sub> | 174 mm | Distance shaft axis           |
| L <sub>2</sub> | 28 mm  | Length fixed link             |
| L <sub>3</sub> | 150 mm | Length guidance groove        |
| A              | 102 mm | Width housing fixing side     |
| N <sub>1</sub> | 42 mm  | Width recess                  |
| N <sub>2</sub> | 98 mm  | Height recess                 |
| T              | 150 mm | Height housing fixing side    |
| Q              | M6     | Connection thread lubrication |
| A <sub>2</sub> | 60 mm  | Width housing                 |

### Mounting dimensions

|                |         |  |
|----------------|---------|--|
| A <sub>1</sub> | 30 mm   | Width guidance groove                    |
|                | H13     | Width guidance groove clearance          |
| H <sub>1</sub> | 204 mm  | Distance guidance grooves                |
|                | 0 mm    | Upper distance guidance groove tolerance |
|                | -0,6 mm | Lower distance guidance groove tolerance |
| N              | 53 mm   | Fixing bore                              |

### Additional information

|                |                     |
|----------------|---------------------|
| TUEO16         | Housing             |
| GNE80-XL-KRR-B | Bearing designation |