



## ★ RTUE120-XL

Take-up housing unit

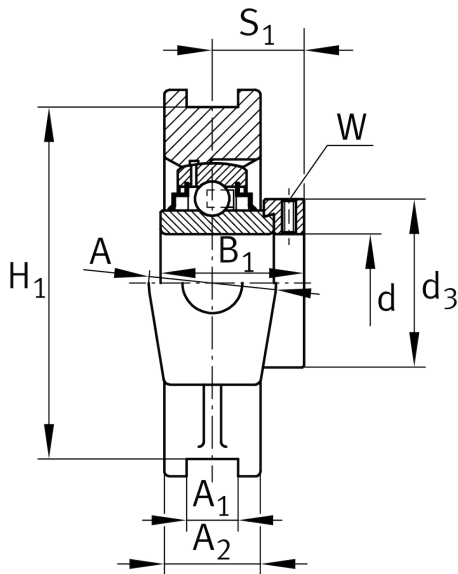
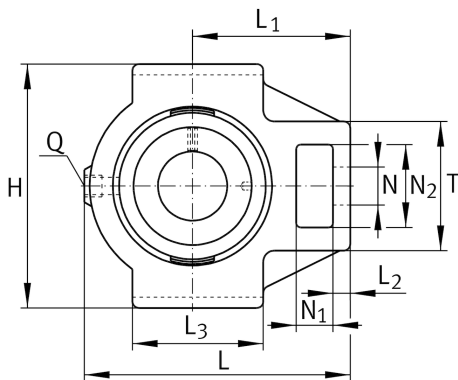
Schaeffler ID:  
0008776970000

★ Preferred product

Take-up housing units RTUE, cast iron housing, radial insert ball bearing with eccentric locking collar, R seals

X-life

### Technical information



### Main Dimensions & Performance Data

d	120 mm	Bore diameter
H	285 mm	Height
L	345 mm	Length total
	23,76 kg	Weight

### Dimensions

L <sub>1</sub>	210 mm	Distance shaft axis
L <sub>2</sub>	35 mm	Length fixed link
L <sub>3</sub>	190 mm	Length guidance groove
A	100 mm	Width housing fixing side
N <sub>1</sub>	45 mm	Width recess
N <sub>2</sub>	95 mm	Height recess
T	150 mm	Height housing fixing side
Q	Rp1/8	Connection thread lubrication
A <sub>2</sub>	70 mm	Width housing

### Mounting dimensions

A <sub>1</sub>	32 mm	Width guidance groove
	H13	Width guidance groove clearance
H <sub>1</sub>	255 mm	Distance guidance grooves
	0,25 mm	Upper distance guidance groove tolerance
	-0,25 mm	Lower distance guidance groove tolerance
N	55 mm	Fixing bore

### Additional information

TUE24	Housing
GE120-XL-KRR-B	Bearing designation