



★ RTUE75-XL

Take-up housing unit

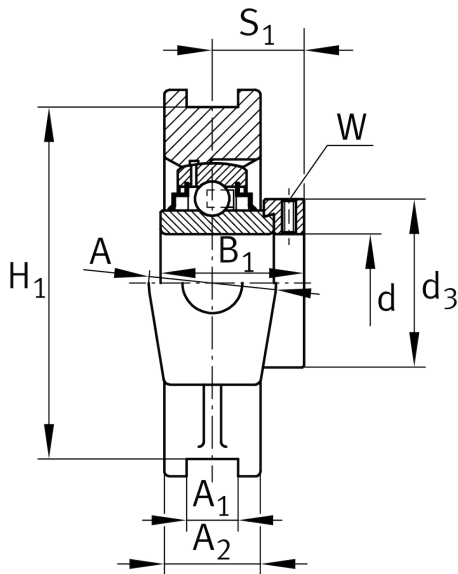
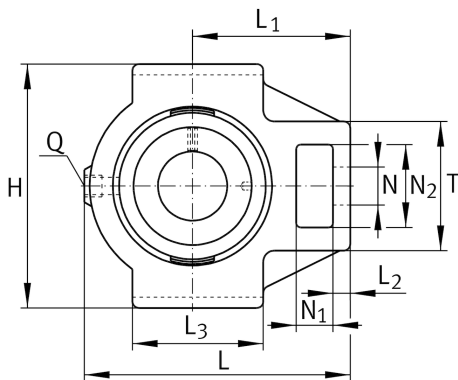
Schaeffler ID:
0008775570000

★ Preferred product

Take-up housing units RTUE, cast iron housing, radial insert ball bearing with eccentric locking collar, R seals

X-life

Technical information



Main Dimensions & Performance Data

| | | |
|---|---------|---------------|
| d | 75 mm | Bore diameter |
| H | 166 mm | Height |
| L | 214 mm | Length total |
| | 6,41 kg | Weight |

Dimensions

| | | |
|----------------|--------|-------------------------------|
| L ₁ | 135 mm | Distance shaft axis |
| L ₂ | 20 mm | Length fixed link |
| L ₃ | 120 mm | Length guidance groove |
| A | 70 mm | Width housing fixing side |
| N ₁ | 35 mm | Width recess |
| N ₂ | 70 mm | Height recess |
| T | 110 mm | Height housing fixing side |
| Q | M6 | Connection thread lubrication |
| A ₂ | 50 mm | Width housing |

Mounting dimensions

| | | |
|----------------|----------|--|
| A ₁ | 25 mm | Width guidance groove |
| | H13 | Width guidance groove clearance |
| H ₁ | 151 mm | Distance guidance grooves |
| | 0,25 mm | Upper distance guidance groove tolerance |
| | -0,25 mm | Lower distance guidance groove tolerance |
| N | 41 mm | Fixing bore |

Additional information

| | |
|---------------|---------------------|
| TUE15 | Housing |
| GE75-XL-KRR-B | Bearing designation |