

★ **TME65-214-XL**

Flanged housing unit

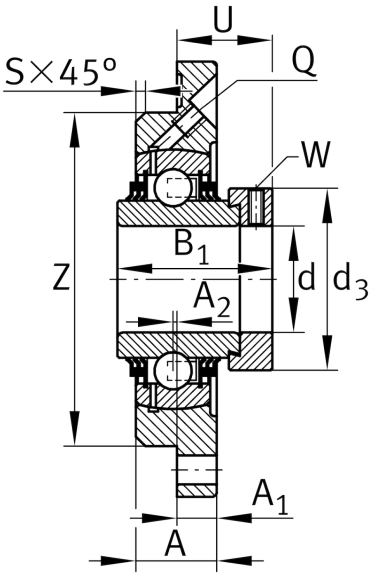
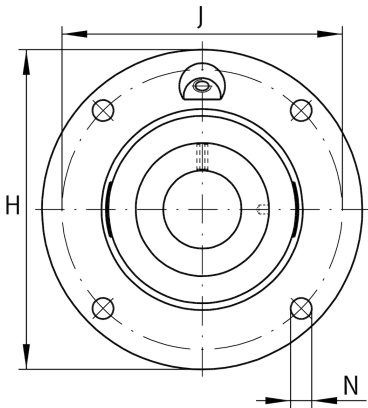
Schaeffler ID:  
0009812490000

★ Preferred product

Housing units TME, four-bolt flanged housing units, cast iron, centring spigot, eccentric locking collar, T seals

**X-life**

Technical information



Main Dimensions & Performance Data

d	65 mm	Bore diameter
H	215 mm	Height flange
B <sub>1</sub>	66 mm	Locking collar total width
U	44,5 mm	Total height unit
C <sub>r</sub>	66.000 N	Basic dynamic load rating, radial
C <sub>0r</sub>	44.000 N	Basic static load rating, radial
C <sub>ur</sub>	2.300 N	Fatigue load limit, radial
	5,3 kg	Weight

Dimensions

A	32 mm	Height housing
A <sub>1</sub>	18 mm	Thickness of flange
S	6 mm	Chamfer width
Q	Rp1/8	Connection thread lubrication

Mounting dimensions

J	177 mm	Distance fixing bore
J	177 mm	Pitch circle diameter (holes)
N	18 mm	Fixing bore
Z	150 mm	Diameter spigot
	h8	Diameter spigot clearance
n	4	Number of screwing holes

Additional information

1	Number of housings
GG.ME14	Housing
GE65-214-XL-KTT-B	Bearing designation