

## ★ NA2200-2RSR

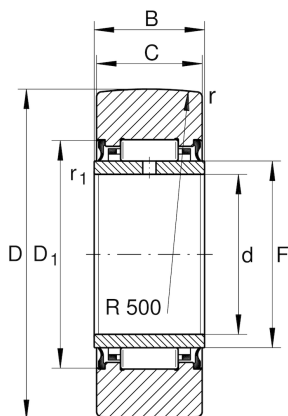
Yoke type track roller

Schaeffler ID:  
0000275960000

★ Preferred product

Yoke type track rollers NA22...-2RSR,  
without axial guidance, lip seals on both  
sides

### Technical information



#### Main Dimensions & Performance Data

D	30 mm	Outside diameter
F	14 mm	Raceway diameter inner ring
C	13,8 mm	Width, outer ring
$C_{r w}$	7.000 N	Basic dynamic load rating, radial
$C_{0r w}$	6.900 N	Basic static load rating, radial
$C_{ur w}$	1.120 N	Fatigue load limit, radial
$n_{DG}$	5.500 1/min	Speed on permanent grease lubrication
	61 g	Weight

#### Dimensions

d	10 mm	Bore diameter
B	14 mm	Width, inner ring
$D_{1 \min}$	20 mm	Minimum mounting dimension
$r_{\min}$	0,6 mm	Minimum chamfer dimension
$r_{1 \min}$	0,3 mm	Minimum chamfer dimension
R	500 mm	Radius of outer ring outside profile