

## ★ NA2201-2RSR

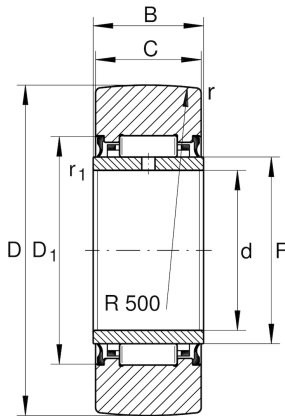
Yoke type track roller

Schaeffler ID:  
0000276180000

★ Preferred product

Yoke type track rollers NA22...-2RSR,  
without axial guidance, lip seals on both  
sides

### Technical information



#### Main Dimensions & Performance Data

D	32 mm	Outside diameter
F	16 mm	Raceway diameter inner ring
C	13,8 mm	Width, outer ring
$C_{r w}$	7.500 N	Basic dynamic load rating, radial
$C_{0r w}$	8.300 N	Basic static load rating, radial
$C_{ur w}$	1.290 N	Fatigue load limit, radial
$n_{DG}$	4.700 1/min	Speed on permanent grease lubrication
	67 g	Weight

#### Dimensions

d	12 mm	Bore diameter
B	14 mm	Width, inner ring
$D_{1 min}$	22 mm	Minimum mounting dimension
$r_{min}$	0,6 mm	Minimum chamfer dimension
$r_{1 min}$	0,3 mm	Minimum chamfer dimension
R	500 mm	Radius of outer ring outside profile