

★ NA2202-2RSR

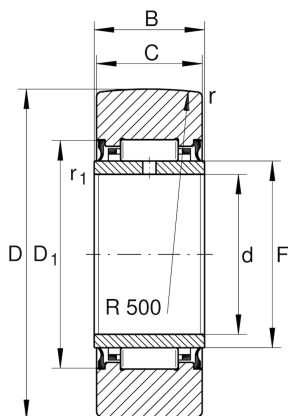
Yoke type track roller

Schaeffler ID:
0000276340000

★ Preferred product

Yoke type track rollers NA22...-2RSR,
without axial guidance, lip seals on both
sides

Technical information



Main Dimensions & Performance Data

D	35 mm	Outside diameter
F	20 mm	Raceway diameter inner ring
C	13,8 mm	Width, outer ring
$C_{r w}$	7.600 N	Basic dynamic load rating, radial
$C_{0r w}$	9.900 N	Basic static load rating, radial
$C_{ur w}$	1.390 N	Fatigue load limit, radial
n_{DG}	3.400 1/min	Speed on permanent grease lubrication
	75 g	Weight

Dimensions

d	15 mm	Bore diameter
B	14 mm	Width, inner ring
$D_{1 min}$	26 mm	Minimum mounting dimension
r_{min}	0,6 mm	Minimum chamfer dimension
$r_{1 min}$	0,3 mm	Minimum chamfer dimension
R	500 mm	Radius of outer ring outside profile