



★ NA2210-2RSR

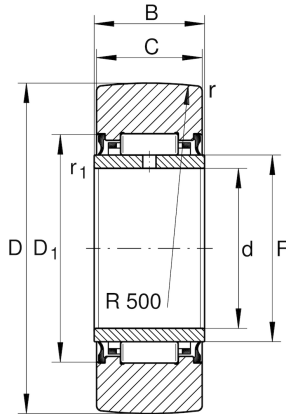
Yoke type track roller

Schaeffler ID:
0000277900000

★ Preferred product

Yoke type track rollers NA22...-2RSR,
without axial guidance, lip seals on both
sides

Technical information



Main Dimensions & Performance Data

D	90 mm	Outside diameter
F	58 mm	Raceway diameter inner ring
C	22,7 mm	Width, outer ring
$C_{r w}$	26.000 N	Basic dynamic load rating, radial
$C_{0 r w}$	44.000 N	Basic static load rating, radial
$C_{u r w}$	5.700 N	Fatigue load limit, radial
$n_{D G}$	650 1/min	Speed on permanent grease lubrication
	0,691 kg	Weight

Dimensions

d	50 mm	Bore diameter
B	23 mm	Width, inner ring
$D_{1 \min}$	68 mm	Minimum mounting dimension
r_{\min}	1,1 mm	Minimum chamfer dimension
$r_{1 \min}$	0,6 mm	Minimum chamfer dimension
R	500 mm	Radius of outer ring outside profile