

★ KRE35-PP

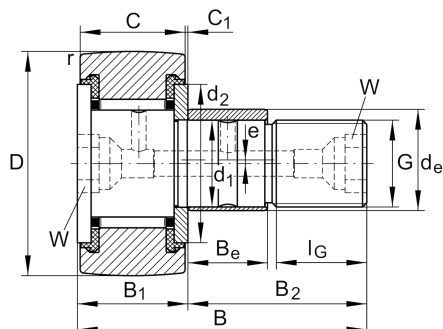
Yoke type track roller

Schaeffler ID:
0055922910000

★ Preferred product

Stud type track rollers KRE...-PP, with axial guidance, with eccentric collar, plastic axial plain washers on both sides

Technical information



Main Dimensions & Performance Data

D	35 mm	Outside diameter
d_1	16 mm	Fit diameter of roller stud / stud
B	52 mm	Width
C_{rw}	9.700 N	Basic dynamic load rating, radial
C_{orw}	14.500 N	Basic static load rating, radial
C_{urw}	1.860 N	Fatigue load limit, radial
n_{DG}	3.600 1/min	Speed on permanent grease lubrication
	0,177 kg	Weight

Dimensions

B_1	19,6 mm	Width of thrust washer
B_2	32,5 mm	Bolt/stud length effectively
B_3	8 mm	Distance to lubrication hole
C	18 mm	Width, outer ring
C_1	0,8 mm	Protrusion outer ring to thrust washer
r_{min}	0,6 mm	Minimum chamfer dimension
d_2	27,6 mm	Stop diameter of thrust washer
d_3	3 mm	Diameter lubrication hole
G	M16X1,5	Thread
l_G	17 mm	Thread length
W	8 mm	Nominal dimension for hexagonal socket
d_e	20 mm	Diameter of eccentric
B_e	14 mm	Width, eccentric
e	1 mm	Eccentricity

Additional information

	NIPA2X7,5	Drive-fit lubrication nipple
M_A	58 Nm	Tightening torque nut