

★ NUTR45100

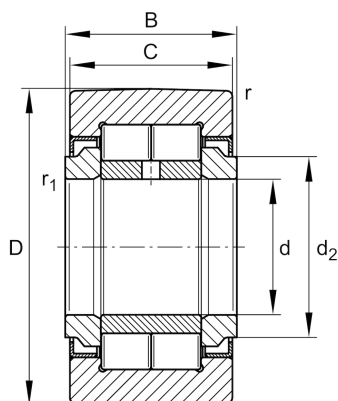
Yoke type track roller

Schaeffler ID:
0095961430000

★ Preferred product

Yoke type track rollers NUTR, full complement cylindrical roller set, with axial guidance, labyrinth seals on both sides

Technical information



Main Dimensions & Performance Data

d	45 mm	Bore diameter
D	100 mm	Outside diameter
B	32 mm	Width, inner ring
$C_{r w}$	72.000 N	Basic dynamic load rating, radial
$C_{0r w}$	116.000 N	Basic static load rating, radial
$C_{ur w}$	16.100 N	Fatigue load limit, radial
n_{DG}	1.400 1/min	Speed on permanent grease lubrication
$F_{0r per}$	116.000 N	Permissible static load, radial
$F_{r per}$	106.000 N	Permissible dynamic load outer ring, radial
	1,387 kg	Weight

Dimensions

C	30 mm	Width, outer ring
d_2	55,2 mm	Stop diameter of thrust washer
r_{min}	1,1 mm	Minimum chamfer dimension
$r_{1 min}$	0,6 mm	Minimum chamfer dimension