

★ PWTR30-2RS-XL

Yoke type track roller

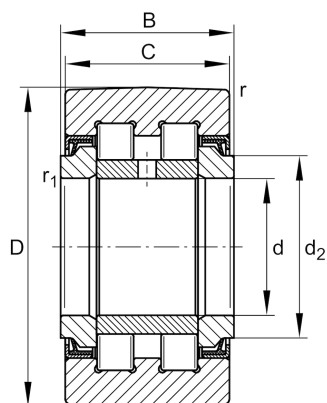
Schaeffler ID:
0566758010000

★ Preferred product

Yoke type track rollers PWTR..-2RS, full complement cylindrical roller set, with axial guidance, lip seals on both sides

X-life

Technical information



Main Dimensions & Performance Data

d	30 mm	Bore diameter
D	62 mm	Outside diameter
B	29 mm	Width, inner ring
$C_{r w}$	35.000 N	Basic dynamic load rating, radial
$C_{0r w}$	46.000 N	Basic static load rating, radial
$C_{ur w}$	5.900 N	Fatigue load limit, radial
n_{DG}	2.200 1/min	Speed on permanent grease lubrication
$F_{0r per}$	46.000 N	Permissible static load, radial
$F_{r per}$	29.000 N	Permissible dynamic load outer ring, radial
	0,452 kg	Weight

Dimensions

C	28 mm	Width, outer ring
d_2	38 mm	Stop diameter of thrust washer
r_{min}	1 mm	Minimum chamfer dimension
$r_{1 min}$	0,5 mm	Minimum chamfer dimension