

## ★ RATR30-XL

Flanged housing unit

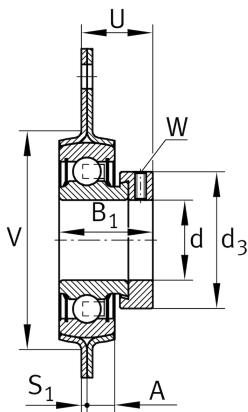
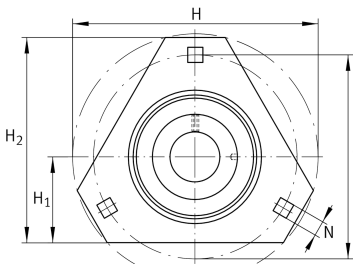
Schaeffler ID:  
0008287340000

★ Preferred product

Housing units RATR, three-bolt flanged housing units, sheet steel, eccentric locking collar, P seals

X-life

### Technical information



### Main Dimensions & Performance Data

d	30 mm	Bore diameter
H <sub>2</sub>	93 mm	Height flange
H	112,7 mm	Height flange
H	112,7 mm	Flange width
U	29,2 mm	Total height unit
C <sub>r</sub>	19.500 N	Basic dynamic load rating, radial
C <sub>0r</sub>	11.300 N	Basic static load rating, radial
C <sub>ur</sub>	480 N	Fatigue load limit, radial
C <sub>0rG</sub>	5.000 N	Load carrying capacity (housing)
C <sub>g</sub>	5.000 N	Load carrying capacity (housing)
	0,5 kg	Weight

### Dimensions

A	8,7 mm	Height housing
H <sub>1</sub>	38,1 mm	Distance shaft axis
S	2,5 mm	Thickness of flange
V	71 mm	Shoulder diameter housing

### Mounting dimensions

J	90,5 mm	Distance fixing bore
J	90,5 mm	Pitch circle diameter (holes)
N	10,5 mm	Fixing square
n	3	Number of screwing holes

### Additional information

	2	Number of housings
	FLAN62-MSTR	Housing
	RAE30-XL-NPP-B	Bearing designation