

## RASEL45-XL

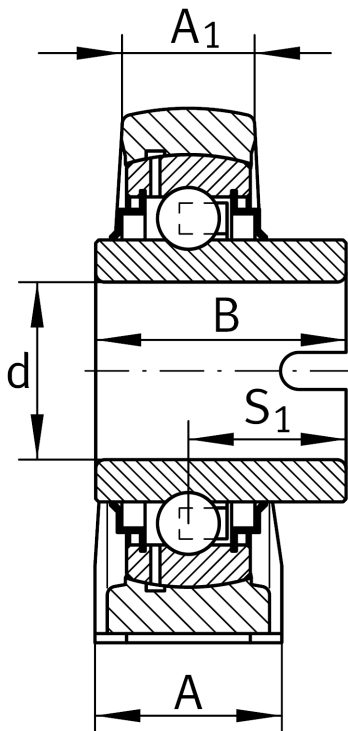
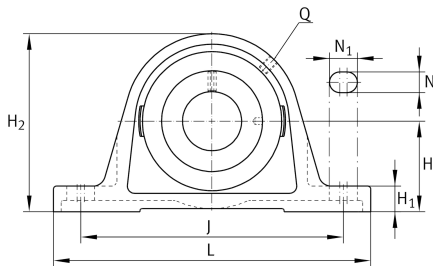
Plummer block housing unit

Schaeffler ID:  
0008487350000

Plummer block housing units RASEL, cast iron housing, non-locating bearing, drive slot on inner ring, R seals

X-life

### Technical information



### Main Dimensions & Performance Data

d	45 mm	Bore diameter
L	192 mm	Length total
H <sub>2</sub>	107 mm	Height
	2,13 kg	Weight

### Dimensions

H	54 mm	Distance shaft axis
A	48 mm	Width (base)
A <sub>1</sub>	32 mm	Width (head)
H <sub>1</sub>	21,5 mm	Height (base)
Q	M6	Connection thread lubrication

### Mounting dimensions

J	149,65 mm	Distance fixing bore
N	14 mm	Width (slot)
N <sub>1</sub>	29 mm	Length (slot)

### Additional information

ASE09	Housing
GLE45-XL-KRR-B	Bearing designation