



## ★ RASE120-XL

Plummer block housing unit

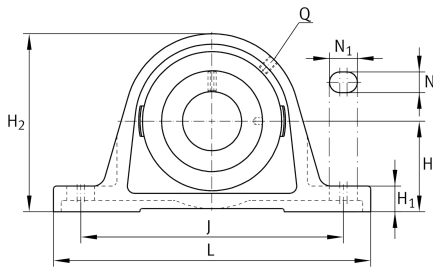
Schaeffler ID:  
0008775810000

★ Preferred product

Plummer block housing units RASE, cast iron housing, radial insert ball bearing with eccentric locking collar, R seals

X-life

### Technical information



#### Main Dimensions & Performance Data

d	120 mm	Bore diameter
L	440 mm	Length total
H <sub>2</sub>	265 mm	Height
	26,5 kg	Weight

#### Dimensions

H	135 mm	Distance shaft axis
A	105 mm	Width (base)
A <sub>1</sub>	70 mm	Width (head)
H <sub>1</sub>	45 mm	Height (base)
Q	M6	Connection thread lubrication

#### Mounting dimensions

J	358 mm	Distance fixing bore
N	33 mm	Width (slot)
N <sub>1</sub>	41 mm	Length (slot)

#### Additional information

ASE24	Housing
GE120-XL-KRR-B	Bearing designation

