



★ RSAO50-XL

Plummer block housing unit

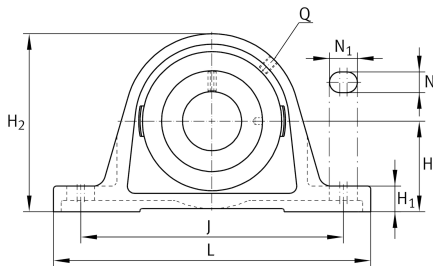
Schaeffler ID:
0009452690000

★ Preferred product

Plummer block housing units RSAO, cast iron housing, radial insert ball bearing with eccentric locking collar, R seals

X-life

Technical information



Main Dimensions & Performance Data

d	50 mm	Bore diameter
L	275 mm	Length total
H ₂	143 mm	Height
	5,97 kg	Weight

Dimensions

H	75 mm	Distance shaft axis
A	75 mm	Width (base)
A ₁	39 mm	Width (head)
H ₁	27 mm	Height (base)
Q	M6	Connection thread lubrication

Mounting dimensions

J	212 mm	Distance fixing bore
N	20 mm	Width (slot)
N ₁	35 mm	Length (slot)

Additional information

SAO10	Housing
GNE50-XL-KRR-B	Bearing designation

