

★ RATR35-XL

Flanged housing unit

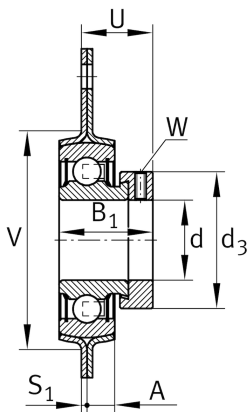
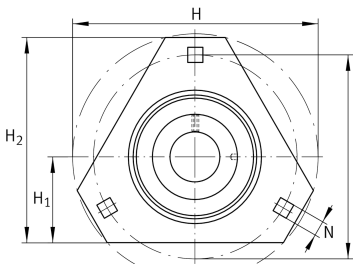
Schaeffler ID:
0009532450000

★ Preferred product

Housing units RATR, three-bolt flanged housing units, sheet steel, eccentric locking collar, P seals

X-life

Technical information



Main Dimensions & Performance Data

d	35 mm	Bore diameter
H ₂	105,6 mm	Height flange
H	122 mm	Height flange
H	122 mm	Flange width
U	31,9 mm	Total height unit
C _r	25.500 N	Basic dynamic load rating, radial
C _{0r}	15.300 N	Basic static load rating, radial
C _{ur}	650 N	Fatigue load limit, radial
C _{0rG}	6.400 N	Load carrying capacity (housing)
C _g	6.400 N	Load carrying capacity (housing)
	0,63 kg	Weight

Dimensions

A	9,5 mm	Height housing
H ₁	44,5 mm	Distance shaft axis
S	2,5 mm	Thickness of flange
V	81 mm	Shoulder diameter housing

Mounting dimensions

J	100 mm	Distance fixing bore
J	100 mm	Pitch circle diameter (holes)
N	10,5 mm	Fixing square
n	3	Number of screwing holes

Additional information

	2	Number of housings
	FLAN72-MSTR	Housing
	RAE35-XL-NPP-B	Bearing designation