

★ 81120-TV

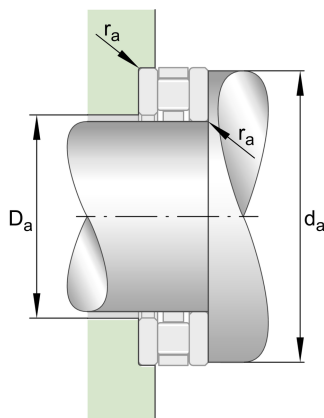
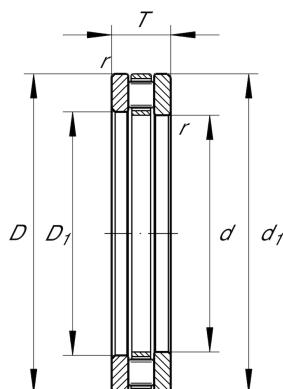
Axial cylindrical roller bearing

Schaeffler ID:
0003615500000

Axial cylindrical roller bearings 811, single direction, comprising K811, GS, WS

★ Preferred product

Technical information



Temperature range

T_{min}	120 °C	Operating temperature min.
T_{max}	-30 °C	Operating temperature max.
	0,902 kg	Weight

Main Dimensions & Performance Data

d	100 mm	Bore diameter
D	135 mm	Outside diameter
T	25 mm	Height
C_a	199.000 N	Basic dynamic load rating, axial
C_{0a}	650.000 N	Basic static load rating, axial
C_{ua}	60.000 N	Fatigue load limit, axial
n_G	2.450 1/min	Limiting speed
n_{gr}	920 1/min	Reference speed

Dimensions

D_1	102 mm	Bore diameter housing washer
d_1	135 mm	Rip diameter shaft washer
r_{min}	1 mm	Minimum chamfer dimension

Mounting dimensions

$d_{a min}$	131 mm	Minimum diameter shaft shoulder
$D_{a max}$	104 mm	Maximum diameter of housing shoulder
$r_{a max}$	1 mm	Maximum recess radius

Additional information

K81120-TV	Axial roller and cage assembly
GS81120	Housing Washer
WS81120	Shaft washer
LS100135	Track Washer