

★ GAY40-XL-NPP-B

Radial insert ball bearing

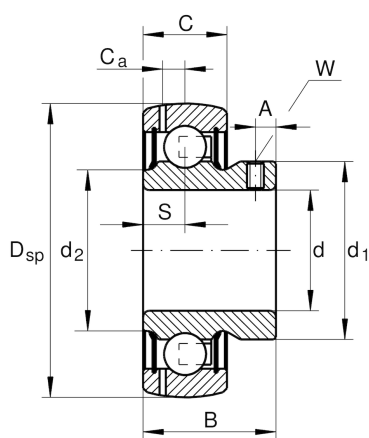
Schaeffler ID:
0008802480000

★ Preferred product

Radial insert ball bearings GAY..-NPP-B, spherical outer ring, location by grub screws, P seals on both sides

X-life

Technical information



Main Dimensions & Performance Data

d	40 mm	Bore diameter
D _{SP}	80 mm	Outside diameter
B	39,45 mm	Width
n _{G Grease}	10.300 1/min	Limiting speed for grease lubrication
C _r	32.500 N	Basic dynamic load rating, radial
C _{0r}	19.800 N	Basic static load rating, radial
C _{ur}	910 N	Fatigue load limit, radial
	0,53 kg	Weight

Dimensions

C	21 mm	Width, outer ring
S	10,5 mm	Distance raceway
d ₁	52,4 mm	Rib diameter inner ring
d ₂	49,3 mm	Rib diameter sealing inner ring
C _a	6,4 mm	Distance to lubrication hole
A	8 mm	Distance thread
W	4 mm	Width of flats

Additional information

f ₀	13,6	Calculation factor
----------------	------	--------------------