

## ★ KWVE20-B-S

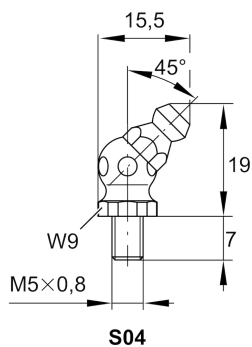
Recirculating ball bearing carriage

Schaeffler ID:  
0125089260240

Carriages KWVE...-B-S, narrow carriage,  
four-row

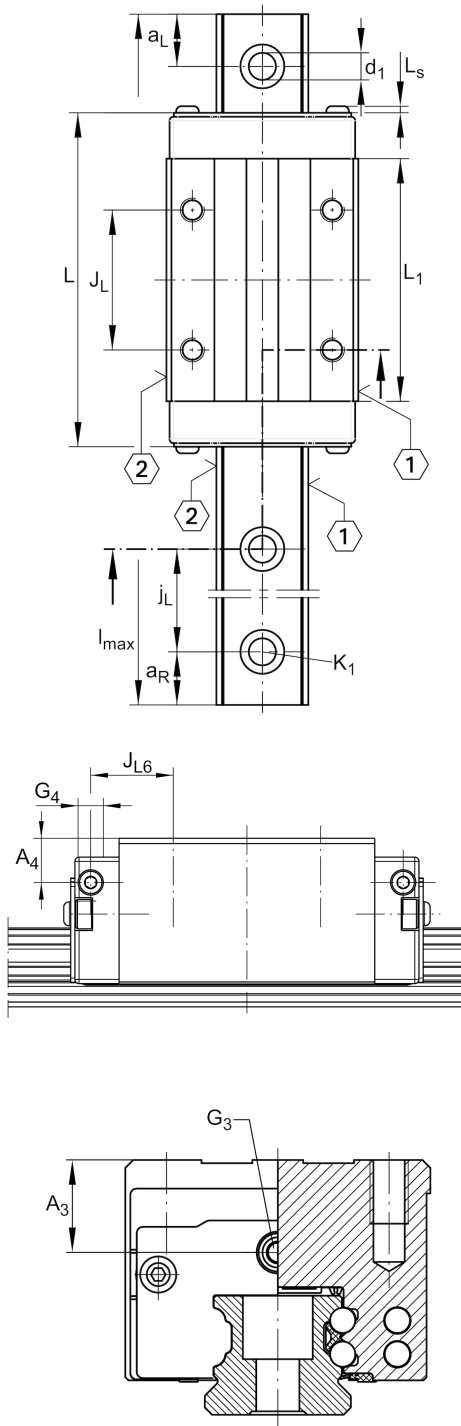
★ Preferred product

### Technical information



### Main Dimensions & Performance Data

H	30 mm	height system
B	44 mm	width carriage
L	71,4 mm	overall length carriage
C	13.100 N	dynamic load rating
C <sub>0</sub>	27.000 N	static load rating
M <sub>0x</sub>	332 Nm	static moment rating about X axis
M <sub>0y</sub>	240 Nm	static moment rating about Y axis
M <sub>0z</sub>	240 Nm	static moment rating about Z axis
	0,356 kg	Weight



### Mounting dimensions

VMKB_065	KWVE	Material name
$A_1$	12 mm	
$J_B$	32 mm	
$b$	20 mm	width rail
$A_2$	6 mm	
$L_1$	50,4 mm	
$L_s$	1,3 mm	
$J_L$	36 mm	
$H_1$	4,5 mm	
$H_5$	5,25 mm	
$T_5$	7,5 mm	
$G_2$	M5	fixing screws below (DIN ISO 4762-12.9)
$G_2 M_A$	10 Nm	maximum tightening torque
$A_3$	7,7 mm	position lubrication connector
$G_3$	M5	lubrication connector
$t_{G_3}$	7 mm	maximum permissible screw depth for lubrication connectors
$A_4$	4,6 mm	position lubrication connector
$G_4$	M5 mm	lubrication connector
$t_{G_4}$	5,5 mm	maximum permissible screw depth for lubrication connectors
$J_{L6}$	11,4 mm	position lubrication connector

