

## ★ IR50X60X20-IS1-XL

Inner ring

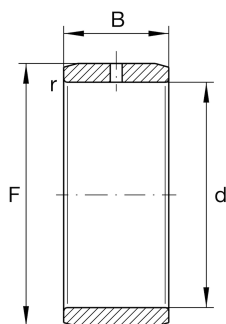
Schaeffler ID:  
0000227130000

Inner rings IR...IS1, precision machined,  
with lubrication hole, to DIN 620

★ Preferred product

X-life

### Technical information



#### Main Dimensions & Performance Data

|                  |           |                                  |
|------------------|-----------|----------------------------------|
| d                | 50 mm     | Bore diameter                    |
| F                | 60 mm     | Raceway diameter inner ring      |
| B                | 20 mm     | Width                            |
|                  | 0 mm      | Raceway diameter upper tolerance |
|                  | -0,011 mm | Raceway diameter lower tolerance |
| r <sub>min</sub> | 1 mm      | Minimum chamfer dimension        |
|                  | 0,142 kg  | Weight                           |

#### Mounting dimensions

|  |   |                             |
|--|---|-----------------------------|
|  | 1 | Number of lubrication holes |
|--|---|-----------------------------|