

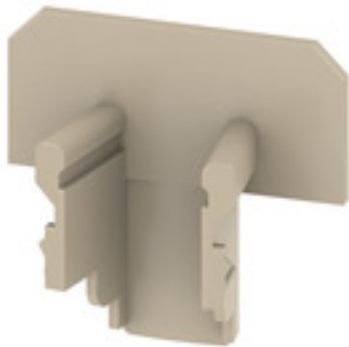
**TSCH 4 AKZ4****Weidmüller Interface GmbH & Co. KG**

Klingenbergstraße 26

D-32758 Detmold

Germany

www.weidmueller.com

**Product image**

A partition plate is used for the optical separation of circuits or used for electrical isolation from neighbouring cross-connectors. In contrast to the end plate, the contour can be larger than the adjacent terminal blocks. However, it should not be smaller, as otherwise the required clearance and creepage distances within the application can no longer be maintained.

**General ordering data**

Version	SAK Series, Small partition, beige, 6 mm
Order No.	<a href="#">0363360000</a>
Type	TSCH 4 AKZ4
GTIN (EAN)	4008 190 136680
Qty.	100 pc(s).

## TSCH 4 AKZ4

Weidmüller Interface GmbH &amp; Co. KG

Klingenbergstraße 26

D-32758 Detmold

Germany

www.weidmueller.com

## Technical data

## Dimensions and weights

Depth	15 mm	Depth (inches)	0.591 inch
Height	16 mm	Height (inches)	0.63 inch
Width	6 mm	Width (inches)	0.236 inch
Net weight	0.181 g		

## Temperatures

Storage temperature	-25 °C...55 °C	Continuous operating temp., min.	-50 °C
Continuous operating temp., max.	100 °C		

## Material data

Material	PA 66	Colour	beige
UL 94 flammability rating	V-2		

## System specifications

Version	End and intermediate plate
---------	----------------------------

## Additional technical data

Installation advice	Direct mounting	Snap-on	Yes
---------------------	-----------------	---------	-----

## General

Installation advice	Direct mounting
---------------------	-----------------

## Classifications

ETIM 6.0	EC000886	ETIM 7.0	EC000886
ETIM 8.0	EC000886	ECLASS 9.0	27-14-11-92
ECLASS 9.1	27-14-11-33	ECLASS 10.0	27-14-11-92
ECLASS 11.0	27-14-11-92	ECLASS 12.0	27-14-11-92

## Approvals

ROHS	Conform
------	---------

## Downloads

User Documentation	<a href="#">StorageConditionsTerminalBlocks</a>
Catalogues	<a href="#">Catalogues in PDF-format</a>