

DK 4/35 1D A1 BL

Weidmüller Interfaces GmbH & Co. KG

Postfach 3030

32760 Detmold

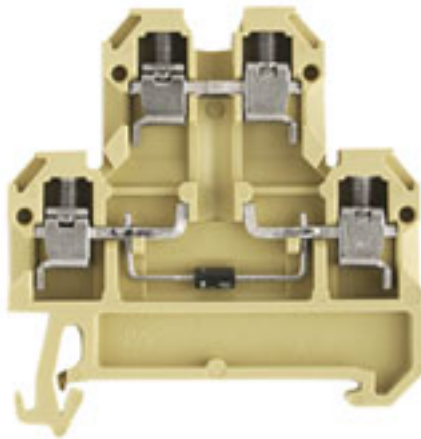
Tel. +49 5231 14-0

Fax. +49 5231 14-2083

info@weidmueller.com

www.weidmueller.com

Product image



Similar to illustration

Why not integrating simple electrical functions into a feed through terminal. It has the same slim design of our feed-through terminal blocks - with additional functions such as cross-connections that can be used. Often, you only need a small component to integrate an external device into your automation technology. Our modular terminal blocks with electronic components make this possible; quickly, simply, and with a perfect fit.

General ordering data

| | |
|------------|---|
| Version | SAK Series, Component terminal, Rated cross-section: 4 mm ² , Screw connection |
| Order No. | 0538980000 |
| Type | DK 4/35 1D A1 BL |
| GTIN (EAN) | 4008190101985 |
| Qty. | 25 Stück |

DK 4/35 1D A1 BL

Weidmüller Interfaces GmbH & Co. KG

Postfach 3030

32760 Detmold

Tel. +49 5231 14-0

Fax. +49 5231 14-2083

info@weidmueller.com

www.weidmueller.com

Technische Daten

Dimensions and weights

| | | | |
|------------|---------|-----------------|------------|
| Depth | 52.5 mm | Depth (inches) | 2.067 inch |
| Height | 50 mm | Height (inches) | 1.969 inch |
| Width | 6 mm | Width (inches) | 0.236 inch |
| Net weight | 12.4 g | | |

Temperatures

| | | | |
|----------------------------------|----------------|----------------------------------|--------|
| Storage temperature | -25 °C...55 °C | Continuous operating temp., min. | -50 °C |
| Continuous operating temp., max. | 100 °C | | |

Material data

| | | | |
|---------------------------|-------|--------|------|
| Material | PA 66 | Colour | blue |
| UL 94 flammability rating | V-2 | | |

System specifications

| | | | |
|-------------------------------------|------------------------------|-------------------------------|-----|
| Version | Screw connection, with diode | End cover plate required | Yes |
| Number of potentials | 2 | Number of levels | 2 |
| Number of clamping points per level | 2 | Number of potentials per tier | 1 |
| Levels cross-connected internally | No | PE connection | No |
| Rail | TS 35 | N-function | Yes |
| PE function | No | PEN function | No |

Additional technical data

| | | | |
|--------------------------|-------|-----------------------------|---------|
| Explosion-tested version | No | Number of similar terminals | 1 |
| Open sides | right | Type of mounting | Snap-on |

Conductors for clamping (rated connection)

| | | | |
|---|----------------------|---|---------------------|
| Blade size | 0.6 x 3.5 mm | Clamping range, max. | 4 mm ² |
| Clamping range, min. | 0.33 mm ² | Clamping screw | M 3 |
| Connection cross-section, stranded, max. | 4 mm ² | Connection cross-section, stranded, min. | 0.5 mm ² |
| Connection direction | on side | Gauge to IEC 60947-1 | A3 |
| Number of connections | 4 | Stripping length | 9 mm |
| Tightening torque, max. | 0.8 Nm | Tightening torque, min. | 0.5 Nm |
| Torque level with DMS electric screwdriver | 2 | Type of connection | Screw connection |
| Wire connection cross section AWG, max. | AWG 12 | Wire connection cross section AWG, min. | AWG 22 |
| Wire connection cross section, finely stranded, max. | 4 mm ² | Wire connection cross section, finely stranded, min. | 0.5 mm ² |
| Wire connection cross-section, finely stranded with wire-end ferrules DIN 46228/1, max. | 4 mm ² | Wire connection cross-section, finely stranded with wire-end ferrules DIN 46228/1, min. | 0.5 mm ² |
| Wire connection cross-section, solid core, max. | 4 mm ² | Wire connection cross-section, solid core, min. | 0.5 mm ² |

Dimensions

| | |
|--------------|-------|
| TS 35 offset | 25 mm |
|--------------|-------|

DK 4/35 1D A1 BL

Weidmüller Interfaces GmbH & Co. KG

Postfach 3030

32760 Detmold

Tel. +49 5231 14-0

Fax. +49 5231 14-2083

info@weidmueller.com

www.weidmueller.com

Technische Daten

General

| | | | |
|---|--------|--|--------|
| Rail | TS 35 | Wire connection cross section AWG max. | AWG 12 |
| Wire connection cross section AWG, min. | AWG 22 | | |

Rating data

| | | | |
|--|-------------------|---|--------|
| Rated cross-section | 4 mm ² | Rated voltage | 380 V |
| Rated current | 10 A | Current at maximum wires | 10 A |
| Volume resistance according to IEC 60947-7-x | 1 mΩ | Power loss in accordance with IEC 60947-7-x | 1.02 W |
| Pollution severity | 3 | | |

Classifications

| | | | |
|-------------|-------------|-------------|-------------|
| ETIM 6.0 | EC000903 | ETIM 7.0 | EC000903 |
| ETIM 8.0 | EC000903 | ECLASS 9.0 | 27-14-11-27 |
| ECLASS 9.1 | 27-14-11-47 | ECLASS 10.0 | 27-14-11-27 |
| ECLASS 11.0 | 27-14-11-27 | ECLASS 12.0 | 27-14-11-27 |

Environmental Product Compliance

| | |
|------------|--------------------------------------|
| REACH SVHC | Lead 7439-92-1 |
| SCIP | c6099607-b1cd-4fc8-8f5b-8c2defa73093 |

Approvals

Approvals



| | |
|------|---------|
| ROHS | Conform |
|------|---------|

Downloads

| | |
|---|--|
| Approval/Certificate/Document of Conformity | EAC certificate Declaration of Conformity CE Declaration of Conformity all terminals UKCA declaration of conformity |
| Engineering Data | WSCAD, EPLAN |
| User Documentation | StorageConditionsTerminalBlocks |
| Catalogues | Catalogues in PDF-format |