

MOFU 35/LO/1

Weidmüller Interface GmbH & Co. KG
Klingenbergstraße 26
D-32758 Detmold
Germany

www.weidmueller.com

Product image

Mounting feet are used to mount components that cannot be snapped directly on a DIN rail.

General ordering data

Version	Accessories, Mounting foot, Polyamide 66
Order No.	0646260000
Type	MOFU 35/LO/1
GTIN (EAN)	4008190178574
Qty.	20 pc(s).

Creation date February 23, 2023 4:15:14 PM CET

Catalogue status 18.02.2023 / We reserve the right to make technical changes.

MOFU 35/LO/1

Weidmüller Interface GmbH & Co. KG

Klingenbergstraße 26

D-32758 Detmold

Germany

www.weidmueller.com

Technical data

Dimensions and weights

Depth	18.35 mm	Depth (inches)	0.722 inch
Height	58 mm	Height (inches)	2.283 inch
Width	18 mm	Width (inches)	0.709 inch
Net weight	5.704 g		

Temperatures

Continuous operating temp., min.	-50 °C	Continuous operating temp., max.	100 °C
----------------------------------	--------	----------------------------------	--------

Material data

Material	Polyamide 66	Colour	orange
UL 94 flammability rating	V-2		

System specifications

Version	Mounting foot	End cover plate required	No
Rail	TS 35		

Additional technical data

Explosion-tested version	No	Type of fixing	Snap-on
Type of mounting	Snap-on		

Conductors for clamping (rated connection)

Type of connection	Tension-clamp connection
--------------------	--------------------------

Dimensions

Pitch in mm (P)	18 mm
-----------------	-------

General

Rail	TS 35
------	-------

Classifications

ETIM 6.0	EC002848	ETIM 7.0	EC002848
ETIM 8.0	EC002848	ECLASS 9.0	27-14-11-92
ECLASS 9.1	27-14-11-92	ECLASS 10.0	27-14-11-92
ECLASS 11.0	27-14-11-92	ECLASS 12.0	27-14-11-92

Approvals

ROHS	Conform
------	---------

Downloads

Engineering Data	CAD data – STEP
Engineering Data	WSCAD
User Documentation	StorageConditionsTerminalBlocks
Catalogues	Catalogues in PDF-format
Brochures	

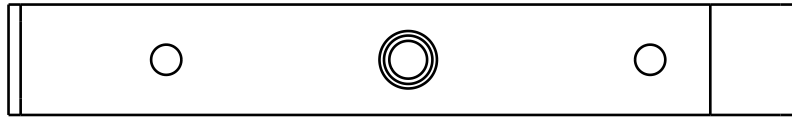
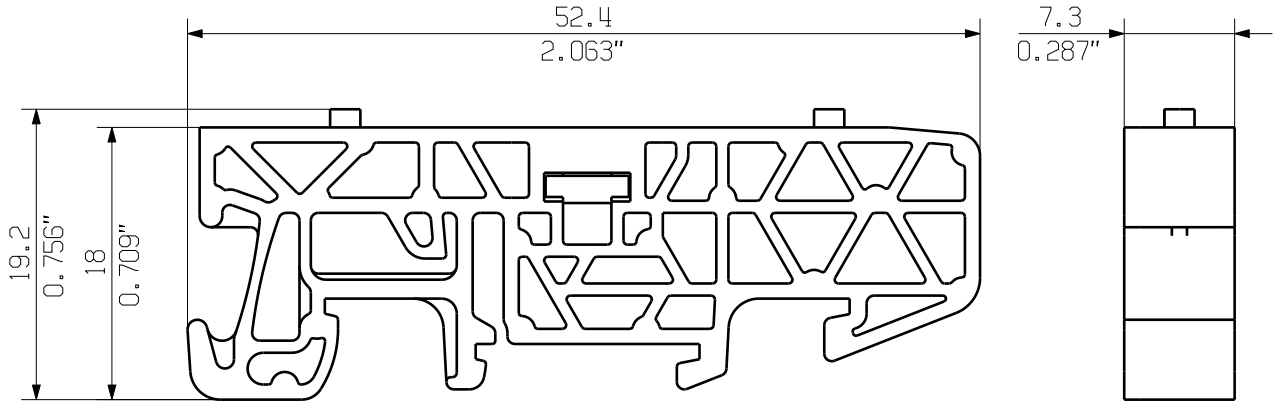
Creation date February 23, 2023 4:15:14 PM CET

Catalogue status 18.02.2023 / We reserve the right to make technical changes.

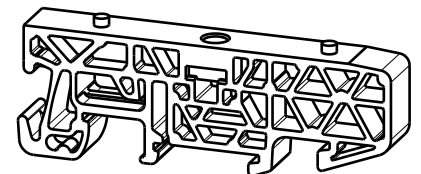
MASSE OHNE TOLERANZ SIND KEINE PRUEFMASSE
DIMS. WITHOUT TOLERANCE ARE NOT CONTROL DIMS.

DIE DEUTSCHE VERSION IST VERBINDLICH
THE GERMAN VERSION IS BINDING

ALLGEMEINGUELTIGE KUNDENZEICHNUNG, AKTUELLER STAND NUR AUF ANFRAGE
GENERAL CUSTOMER DRAWING, TOPICAL VERSION ONLY IF REQUIRED



M 1/1



WEITERGABE SOWIE VERVIELFAELTIGUNG DIESES DOKUMENTS, VERWERTUNG UND MITTEILUNG SEINES INHALTS SIND VERBOTEN, SOWEIT NICHT AUSDRUECKLICH GESTATTET. ZUWIDERHANDLUNGEN VERPFLICHTEN ZU SCHADENERSATZ. ALLE RECHTE FUER DEN FALL DER PATENT-, GEBRAUCHSMUSTER- ODER GESCHMACKSMUSTEREINTRAGUNG VORBEHALTEN. THE REPRODUCTION, DISTRIBUTION AND UTILIZATION OF THIS DOCUMENT AS WELL AS THE COMMUNICATION OF ITS CONTENTS TO OTHERS WITHOUT EXPLICIT AUTHORIZATION IS PROHIBITED. OFFENDERS WILL BE HELD LIABLE FOR THE PAYMENT OF DAMAGES. WEIDMUELLER EXCLUSIVELY RESERVES THE RIGHT TO FILE FOR PATENTS, UTILITY MODELS OR DESIGNS. © WEIDMUELLER INTERFACE GmbH & Co.KG

GENERAL TOLERANCE:
DIN ISO 2768-mK



MAX. NRN./NOS.

84373/5
29.09.15
01
GUETZLAFF_T
MODIFICATION

Weidmüller

CAT.NO.: 193760000

4 42839 02

DRAWING NO. ISSUE NO.
SHEET 01 OF 01 SHEETS



DATE NAME

DRAWN 24.02.2006 NEUMANN_G

RESPONSIBLE KRUG_M

CHECKED 02.10.2015 LANG_T

APPROVED LANG_T

BV/SV 7.62HP MOFU GR
MONTAGEFUSS
SNAP ON FOOT

SCALE: 2/1

SUPERSEDES: .

PRODUCT FILE: SV/BV 7.62 HP

7340