

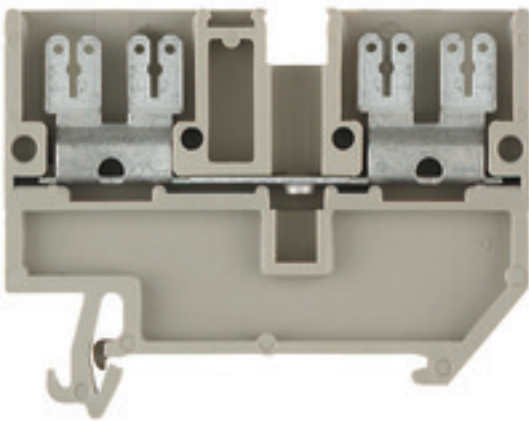
**AST 1/35 6.3/2.8 DB****Weidmüller Interface GmbH & Co. KG**

Klingenbergstraße 26

D-32758 Detmold

Germany

www.weidmueller.com

**Product image**

Are you looking for an interface from electrical engineering to electronics? To be able to feed through to the electronic devices on the panel sometimes a solder connection or a standard pluggable solution is appropriate.

**General ordering data**

Version	SAK Series, Feed-through terminal, Rated cross-section: 2.5 mm <sup>2</sup> , Flat-blade connection, Direct mounting
Order No.	<a href="#">0699600000</a>
Type	AST 1/35 6.3/2.8 DB
GTIN (EAN)	4008190350666
Qty.	50 pc(s).

Creation date March 7, 2023 2:00:38 PM CET

Catalogue status 03.03.2023 / We reserve the right to make technical changes.

## AST 1/35 6.3/2.8 DB

Weidmüller Interface GmbH &amp; Co. KG

Klingenbergstraße 26

D-32758 Detmold

Germany

www.weidmueller.com

## Technical data

## Dimensions and weights

Depth	46 mm	Depth (inches)	1.811 inch
Height	58 mm	Height (inches)	2.283 inch
Width	6.5 mm	Width (inches)	0.256 inch
Net weight	10.74 g		

## Temperatures

Storage temperature	-25 °C...55 °C	Continuous operating temp., min.	-50 °C
Continuous operating temp., max.	120 °C		

## Material data

Material	Wemid	Colour	dark beige
UL 94 flammability rating	V-0		

## System specifications

Version	With cable lug connection F2.8, With cable lug connection F6.3, One end without connector	End cover plate required	Yes
Number of levels	1	Number of clamping points per level	4
Number of potentials per tier	1	Levels cross-connected internally	No
PE connection	No	Rail	TS 35

## Additional technical data

Explosion-tested version	No	Installation advice	Direct mounting
Number of similar terminals	1	Open sides	right
Type of mounting	Snap-on		

## CSA rating data

Certificate No. (CSA)	12400-142	Current size C (CSA)	16 A
Voltage size C (CSA)	300 V		

## Conductors for clamping (rated connection)

Clamping range, max.	2.5 mm <sup>2</sup>	Clamping range, min.	0.5 mm <sup>2</sup>
Connection direction	top	Number of connections	4
Type of connection	Flat-blade connection	Wire connection cross section, finely stranded, max.	2.5 mm <sup>2</sup>
Wire connection cross section, finely stranded, min.	0.5 mm <sup>2</sup>		

## General

Installation advice	Direct mounting	Rail	TS 35
Standards	IEC 60947-7-1, IEC 61210		

## Other connections

Rated cross-section spade connector 2.8 mm	1 mm <sup>2</sup>	Rated cross-section spade connector 6.3 mm	2.5 mm <sup>2</sup>
--	-------------------	--	---------------------

Creation date March 7, 2023 2:00:38 PM CET

Catalogue status 03.03.2023 / We reserve the right to make technical changes.

2

## AST 1/35 6.3/2.8 DB

Weidmüller Interface GmbH &amp; Co. KG

Klingenbergstraße 26

D-32758 Detmold

Germany

www.weidmueller.com

## Technical data

## Rating data

Rated cross-section	2.5 mm <sup>2</sup>	Rated voltage	500 V
Rated current	20 A	Current at maximum wires	20 A
Standards	IEC 60947-7-1, IEC 61210	Volume resistance according to IEC 60947-7-x	1.33 mΩ
Rated impulse withstand voltage	6 kV	Power loss in accordance with IEC 60947-7-x	0.77 W
Pollution severity	3		

## UL rating data

Certificate No. (UR)	E60693	Current size C (UR)	13 A
Voltage size C (UR)	300 V		

## Classifications

ETIM 6.0	EC000897	ETIM 7.0	EC000897
ETIM 8.0	EC000897	ECLASS 9.0	27-14-11-20
ECLASS 9.1	27-14-11-20	ECLASS 10.0	27-14-11-20
ECLASS 11.0	27-14-11-20	ECLASS 12.0	27-14-11-20

## Approvals

Approvals



ROHS	Conform
UL File Number Search	UL Website
Certificate No. (UR)	E60693

## Downloads

Approval/Certificate/Document of Conformity	<a href="#">EAC certificate</a> <a href="#">MARITREG Certificate</a> <a href="#">Declaration of Conformity</a> <a href="#">CE Declaration of Conformity all terminals</a> <a href="#">UKCA declaration of conformity</a>
Engineering Data	<a href="#">CAD data – STEP</a>
Engineering Data	<a href="#">WSCAD</a>
User Documentation	<a href="#">StorageConditionsTerminalBlocks</a>
Catalogues	<a href="#">Catalogues in PDF-format</a>