

VSSC6 GDT 24VAC/DC 10KA

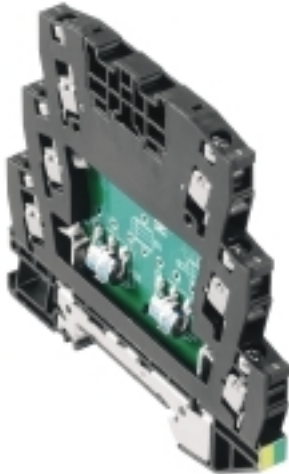
Weidmüller Interface GmbH & Co. KG

Klingenbergstraße 26

D-32758 Detmold

Germany

www.weidmueller.com



Similar to illustration

Surge protection with individual components
 With gas-discharge tubes in terminal design
 Gas-discharge tubes / sparkover gaps (GDT) are designed with a terminal shape. They are approved for a maximum DC voltage, which is printed on the component. Any voltage greater than the amount specified is safely discharged within about 10-100µs. Gas arresters can be used for high-power applications.

General ordering data

Version	Surge protection for instrumentation and control, Surge protection for measurement and control, $U_p(L/N-PE) < 1000 \text{ V}$
Order No.	1064640000
Type	VSSC6 GDT 24VAC/DC 10KA
GTIN (EAN)	4032248829958
Qty.	10 pc(s).

Creation date March 3, 2023 5:27:45 PM CET

Catalogue status 18.02.2023 / We reserve the right to make technical changes.

VSSC6 GDT 24VAC/DC 10KA

Weidmüller Interface GmbH & Co. KG

Klingenbergstraße 26

D-32758 Detmold

Germany

www.weidmueller.com

Technical data

Dimensions and weights

Depth	81 mm	Depth (inches)	3.189 inch
Height	88.5 mm	Height (inches)	3.484 inch
Width	6.2 mm	Width (inches)	0.244 inch
Net weight	44.2 g		

Temperatures

Storage temperature	-40 °C...80 °C	Operating temperature	-40 °C...70 °C
Operating temperature, min.	-40 °C	Operating temperature, max.	70 °C
Humidity	5...96 %		

Probability of failure

SIL in compliance with IEC 61508	3	MTTF	11,416 Jahre
SFF	100 %	λges	10
PFH in 1*10 ⁻⁹ per hour	0		

CSA protection data

Gas group C	IIB	Gas group D	IIA
Gas groups A, B	IIC	Input current, max. I _I	12 A
Input voltage, max. U _i	42 V	Internal capacity, max. C _I	0 nF
Internal inductance, max. L _I	0 μH		

General data

Colour	black	Design	Terminal
Isolating function	No	Optical function display	No
Protection degree	IP20	Rail	TS 35
Segment	Measurement - Monitoring - Setting	UL 94 flammability rating	V-0
Version	Surge protection for measurement and control		

Insulation coordination acc. to EN 50178

Pollution severity	2	Surge voltage category	III
--------------------	---	------------------------	-----

Rated data IEC / EN

Capacitance	1.5 nF	Discharge current I _{max} (8/20μs) wire-PE	10 kA
Discharge current I _n (8/20μs) wire-PE	2.5 kA	Discharge current, max. (8/20 μs)	20 kA
Lightning test current I _{imp} (10/350 μs)	1 kA	Lightning test current, I _{imp} (10/350 μs)	1 kA
Max. continuous voltage, U _c (AC)	30 V	Wire-PE	1 kA
Number of poles	1	Max. continuous voltage, U _c (DC)	42 V
Protection level U _p (typ.)	< 1000 V	Overload - failure mode	Modus 2
Rated voltage (AC)	24 V	Rated current I _N	12 A
Requirements category acc. to IEC 61643-21	C2, C3, D1	Rated voltage (DC)	34 V
Surge current-carrying capacity C2	2.5 kA 8/20 μs 5 kV 1.2/50 μs	Standards	IEC 61643-21
Surge current-carrying capacity D1	1 kA 10/350 μs	Surge current-carrying capacity C3	50 A 10/1000 μs
Volume resistance	<0.1 Ω	Voltage type	AC/DC

Creation date March 3, 2023 5:27:45 PM CET

Catalogue status 18.02.2023 / We reserve the right to make technical changes.

2

VSSC6 GDT 24VAC/DC 10KA

Weidmüller Interface GmbH & Co. KG

Klingenbergstraße 26

D-32758 Detmold

Germany

www.weidmueller.com

Technical data

Further details of approvals

GOST certificate GOST-Zertifikat

Connection data

Stripping length	10 mm	Type of connection	Screw connection
Tightening torque, min.	0.5 Nm	Tightening torque, max.	0.8 Nm
Clamping range, min.	0.5 mm ²	Clamping range, max.	4 mm ²
Wire cross-section, solid, min.	0.5 mm ²	Wire cross-section, solid, max.	6 mm ²
Conductor cross-section, flexible, AEH (DIN 46228-1), min.	0.5 mm ²	Conductor cross-section, flexible, AEH (DIN 46228-1), max.	4 mm ²
Connection cross-section, stranded, min.	0.5 mm ²	Connection cross-section, stranded, max.	4 mm ²

Ratings IECEx/ATEX/cUL

cUL certificate cUL Certificate

Classifications

ETIM 6.0	EC000943	ETIM 7.0	EC000943
ETIM 8.0	EC000943	ECLASS 9.0	27-13-08-07
ECLASS 9.1	27-13-08-07	ECLASS 10.0	27-13-08-07
ECLASS 11.0	27-13-08-07	ECLASS 12.0	27-17-90-90

Tender specification sheets

Long specification	<p>Feed-through terminal, 12.4mm wide with sparkover gap between the two signal lines and the mounting rail potential, TS 35 contact base. A signal with max. 12A can be protected here. When the terminal is fitted, a simultaneous electrically conducting contact is made between the mounting rail (earth) and the reference potential (ground) of the protection circuit in the terminal. Optical identification of the terminal based on the type of protected switching and the voltage level. The terminal can be labelled or marked.</p>	<p>Short specification</p> <p>Feed-through terminal with sparkover gaps (GDT) between two signal lines and the mounting rail potential, TS 35 contact base. Version: 24 V UC 10 kA</p>
--------------------	---	--

Environmental Product Compliance

REACH SVHC Lead 7439-92-1

Important note

Product information Mode 2: State where the voltage-limiting part of the SPD was short-circuited due to a very low impedance within the SPD. The line is inoperable, but the measuring equipment is still protected by means of a short-circuit.

Creation date March 3, 2023 5:27:45 PM CET

Catalogue status 18.02.2023 / We reserve the right to make technical changes.

Data sheet**VSSC6 GDT 24VAC/DC 10KA**

Weidmüller Interface GmbH & Co. KG
Klingenbergstraße 26
D-32758 Detmold
Germany

www.weidmueller.com

Technical data**Approvals**

Approvals



ROHS

Conform

Downloads

Approval/Certificate/Document of Conformity	SIL Paper EU Konformitätserklärung / EU Declaration of Conformity
Engineering Data	CAD data – STEP
Engineering Data	WSCAD
User Documentation	Beipackzettel / Instruction sheet
Catalogues	Catalogues in PDF-format
Brochures	

VSSC6 GDT 24VAC/DC 10KA

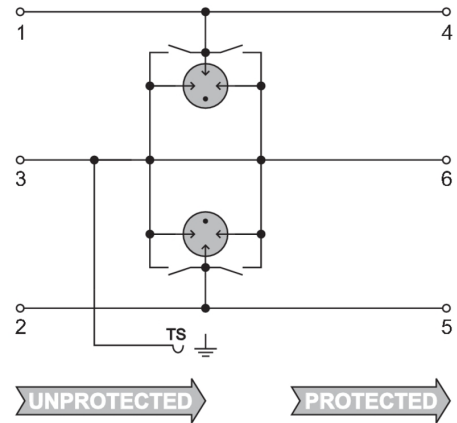
Weidmüller Interface GmbH & Co. KG
Klingenbergstraße 26
D-32758 Detmold
Germany

www.weidmueller.com

Drawings



Similar to illustration



Circuit diagram

