

**WEW 32/1 LCP/NA****Weidmüller Interfaces GmbH & Co. KG**

Postfach 3030

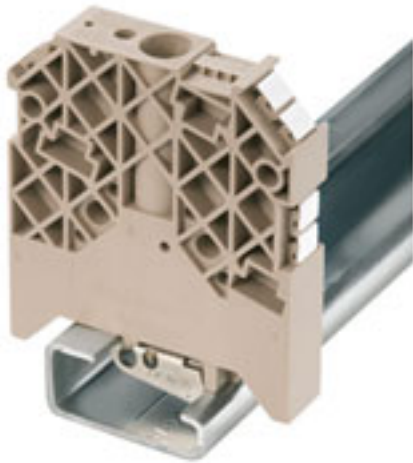
32760 Detmold

Tel. +49 5231 14-0

Fax. +49 5231 14-2083

info@weidmueller.com

www.weidmueller.com



Weidmüller's range of products includes end brackets that guarantee a permanent, reliable mounting on the terminal rail and prevent sliding. Versions with and without screws are available. The end brackets include marking options, also for group markers, and also a test plug holder.

**General ordering data**

Version	Accessories
Order No.	<a href="#">1067660000</a>
Type	WEW 32/1 LCP/NA
GTIN (EAN)	4008190072353
Qty.	50 pc(s).

**WEW 32/1 LCP/NA**
**Weidmüller Interfaces GmbH & Co. KG**

Postfach 3030

32760 Detmold

Tel. +49 5231 14-0

Fax. +49 5231 14-2083

[info@weidmueller.com](mailto:info@weidmueller.com)
[www.weidmueller.com](http://www.weidmueller.com)
**Technical data**
**Dimensions and weights**

Depth	67 mm	Depth (inches)	2.638 inch
Height	56 mm	Height (inches)	2.205 inch
Width	12.2 mm	Width (inches)	0.48 inch
Net weight	36.48 g		

**Temperatures**

Continuous operating temp., min.	-60 °C	Continuous operating temp., max.	130 °C
----------------------------------	--------	----------------------------------	--------

**Material data**

Material	Wemid	Colour	Light Grey
UL 94 flammability rating	V-0		

**Additional technical data**

Type of mounting	TS 32
------------------	-------

**Classifications**

ETIM 6.0	EC001041	ETIM 7.0	EC001041
ETIM 8.0	EC001041	ECLASS 9.0	27-14-11-35
ECLASS 9.1	27-14-11-35	ECLASS 10.0	27-14-11-35
ECLASS 11.0	27-14-11-35	ECLASS 12.0	27-14-11-35

**Approvals**

ROHS	Conform
------	---------

**Downloads**

Catalogues	<a href="#">Catalogues in PDF-format</a>
------------	--