

CH20M22 S PPSC RD 2014

Weidmüller Interface GmbH & Co. KG

Klingenbergstraße 26

D-32758 Detmold

Germany

www.weidmueller.com

Product image



Superior efficiency, flexibility and design - the "standard tailor-made fit"

When selecting a housing design, flexibility is a key factor. Other important criteria are: scalability, customised design, innovative functionality and cost efficiency. You need a choice which offers the maximum performance with the minimum overhead.

The CH20M22 modular electronics housing is the standard format from amongst the different housing widths. It has the optimal width for most typical electronics applications.

The entire system is characterized by excellence: outstanding scalability and flexibility, a high security level, innovative application functionality and a variety of practical details.

- **Quicker installation** with features such as "Wire ready" the universal multi-tool screw head
- **User-friendly operations:** with clear and permanent labelling and extra marking possibilities, integrated release clip or transparent cover
- **Maximum interference immunity** with ESD-compliant construction featuring deeply overlapping module joint edges made from high-performance plastic
- **High operational reliability** with the unique Auto-Set coding system and featuring double-sided touch protection on the pin header and socket blocks

CH20M - a compact name for the most flexible system available on the market. It doesn't just stand for "Component Housing IP20 Modular".

CH20M also stands for efficiency and innovation throughout design, production and use.

General ordering data

| | |
|---|--|
| Version | Modular housing, OMNIMATE Housing - series CH20M red, Width: 22.5 mm |
| Order No. | 1206890000 |
| Type | CH20M22 S PPSC RD 2014 |
| GTIN (EAN) | 4032248988754 |
| Qty. | 10 pc(s). |
| Information regarding whole assembly, see referenced articles | 1104450000 |

Creation date March 1, 2023 10:40:26 AM CET

Catalogue status 18.02.2023 / We reserve the right to make technical changes.

CH20M22 S PPSC RD 2014

Weidmüller Interface GmbH & Co. KG
 Klingenbergstraße 26
 D-32758 Detmold
 Germany

www.weidmueller.com

Technical data

Dimensions and weights

| | | | |
|------------|----------|-----------------|------------|
| Depth | 105.5 mm | Depth (inches) | 4.154 inch |
| Height | 22.8 mm | Height (inches) | 0.898 inch |
| Width | 22.5 mm | Width (inches) | 0.886 inch |
| Net weight | 12.2 g | | |

Temperatures

| | | | |
|-----------------------------|------------------|-----------------------------|---|
| Operating temperature range | -40 °C... 120 °C | Operating temperature, min. | -40 °C |
| Operating temperature, max. | 120 °C | Humidity | 5 - 93% rel. humidity, Tu = 40°C, no condensation |

Component Properties

| | | | |
|---|----|----------------------------------|---|
| Cut out as preparation for functional port integrated | No | Number of connection levels | 2 |
| Number of poles, max. | 8 | Number of slots for female plugs | 2 |
| Number of ventilation openings | 1 | | |

General data

| | | | |
|----------------------|-----|------------------------|-------------------------|
| Colour | red | Colour chart (similar) | RAL 3020 |
| Encapsulation option | No | Protection degree | IP20 in installed state |

Material data

| | | | |
|----------------------------------|-----------|---------------------------|-------------|
| Comparative Tracking Index (CTI) | 600 ≤ CTI | Insulating material | PA 66 GF 30 |
| Insulating material group | I | UL 94 flammability rating | V-0 |

Classifications

| | | | |
|-------------|-------------|-------------|-------------|
| ETIM 6.0 | EC001031 | ETIM 7.0 | EC001031 |
| ETIM 8.0 | EC001031 | ECLASS 9.0 | 27-18-27-90 |
| ECLASS 9.1 | 27-18-27-90 | ECLASS 10.0 | 27-18-27-92 |
| ECLASS 11.0 | 27-18-27-92 | ECLASS 12.0 | 27-18-27-92 |

Approvals

| | |
|------|---------|
| ROHS | Conform |
|------|---------|

Downloads

| | |
|------------------|--|
| Engineering Data | CAD data – STEP |
| Catalogues | Catalogues in PDF-format |

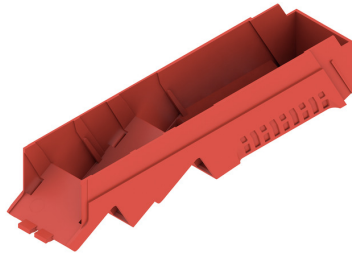
CH20M22 S PPSC RD 2014

Weidmüller Interface GmbH & Co. KG
Klingenbergstraße 26
D-32758 Detmold
Germany

www.weidmueller.com

Drawings

Product image



Product image



Dimensioned drawing

