

ACT20C-AI-AO-MTCP

Weidmüller Interfaces GmbH & Co. KG

Postfach 3030

32760 Detmold

Tel. +49 5231 14-0

Fax. +49 5231 14-2083

info@weidmueller.com

www.weidmueller.com

Only remaining stock available

Product image



FDT2

The ACT20C series was especially developed for applications with continuous processes. It enables the continuous monitoring of diagnostic, device and process information ("condition monitoring"). Several ACT20C components form a station which consists of an ACT20C Ethernet gateway, communicative ACT20C signal converters and an ACT20C bus termination terminal.

General ordering data

Order No.	1334490000
Type	ACT20C-AI-AO-MTCP
GTIN (EAN)	4050118137675
Qty.	1 Stück
Delivery status	This article will no longer be available in the future.
Available until	2022-12-31

ACT20C-AI-AO-MTCP

Weidmüller Interfaces GmbH & Co. KG

Postfach 3030

32760 Detmold

Tel. +49 5231 14-0

Fax. +49 5231 14-2083

info@weidmueller.com

www.weidmueller.com

Technische Daten

Dimensions and weights

Depth	113.6 mm	Depth (inches)	4.472 inch
Width	22.5 mm	Width (inches)	0.886 inch
Length	119.2 mm	Length (inches)	4.693 inch
Net weight	169 g		

Temperatures

Storage temperature	-20 °C...85 °C	Operating temperature	-20 °C...70 °C
Operating temperature, min.	-20 °C	Operating temperature, max.	70 °C
Humidity	0...95 % (no condensation)		

Communication

Addressing	DHCP or manual adjustment	Configuration	FDT/DTM (Ethernet or service interface)
Interface	RJ45: female-female, Cat.5 to 100 MHz, Jack plug for CBX200	Protocol	FDT/DTM, Modbus/TCP
RJ45 ports	10/100BaseT(X), auto negotiation		

Input

Input current	0...20 mA, 4...20 mA	Input voltage	0(2)...10 V
Number of inputs	1	Sensor supply	> 17 V DC at 20 mA

Output

Load impedance current	≤ 500 Ω	Number of outputs	1
Output current	0...20 mA, 4...20 mA	Output voltage, note	0...10 V
load impedance voltage	≥ 10 kΩ		

Output (analogue)

Load resistance current	≤ 500 Ω	Load resistance voltage	≥ 10 kΩ
Output current	0...20 mA, 4...20 mA	Output current	0(4)...20 mA
Output voltage	0...10 V	Transmit function	direct or inverted

General data

Accuracy	< 0.15% end value (+ 0.05% > 55 °C), Current: 1 uA / 30 uA (+ 10 uA > 55°C), Voltage: 1 mV / 15 mV (+ 5 mV > 55°C)	Configuration	FDT/DTM (Ethernet or service interface)
Galvanic isolation	4-way isolator; between input / output / power supply / Ethernet	Power consumption	≤ 3.5 W
Rail	TS 35	Temperature coefficient	≤ 0.01 % / °C
Voltage supply	24 V DC ± 25 %		

ACT20C-AI-AO-MTCP

Weidmüller Interfaces GmbH & Co. KG

Postfach 3030

32760 Detmold

Tel. +49 5231 14-0

Fax. +49 5231 14-2083

info@weidmueller.com

Technische Daten

Insulation coordination

EMC standards	EN 61326-1:2006	Galvanic isolation	www.weidmueller.com	Way isolator, between input / output / power supply / Ethernet
Pollution severity	2	Rated voltage / test voltage: Ethernet interface to supply / functional earth to supply / Ethernet interface		31.2 V DC / 0.9 kV _{rms} in secondary electrical circuits, basic insulation
Rated voltage / test voltage: functional earth to input / output	300 V _{rms} / 1.1 kV _{rms} in secondary electrical circuits, basic insulation	Rated voltage / test voltage: input / output to output / input / supply / Ethernet interface		300 V _{rms} / 1.7 kV _{rms} in secondary electrical circuits, reinforced insulation
Recommendations	Namur NE43, Namur NE44, Namur NE107			

Connection data

Type of connection	Screw connection / RJ45 plug-in connector	Tightening torque, min.	0.4 Nm
Tightening torque, max.	0.6 Nm	Clamping range, rated connection	1.5 mm ²
Clamping range, min.	0.5 mm ²	Clamping range, max.	2.5 mm ²
Wire connection cross section AWG, min.	AWG 30	Wire connection cross section AWG, max.	AWG 14
Wire cross-section, solid, min.	0.5 mm ²	Wire cross-section, solid, max.	2.5 mm ²

Classifications

ETIM 6.0	EC002653	ETIM 7.0	EC002653
ETIM 8.0	EC002653	ECLASS 9.0	27-21-01-20
ECLASS 9.1	27-21-01-90	ECLASS 10.0	27-21-01-20
ECLASS 11.0	27-21-01-20	ECLASS 12.0	27-21-01-20

Environmental Product Compliance

REACH SVHC	Lead 7439-92-1
SCIP	2f6dd957-421a-46db-a0c2-cf1609156924

Important note

Product information

With the ACT20C, Weidmüller is presenting a completely new type of signal converter. The compact module is equipped with an Ethernet connection and provides, in addition to signals, precise information on the status of sensors, signal processing and cabling.

ACT20C, as a signal converter, isolates, scales and converts analogue current and voltage signals; it can be configured directly with the "WI-Manager" software or via an Ethernet network. The software is based on the supplier-independent FDT/DTM technology.

The ACT20C has been designed specifically for process automation in order to continuously forward measured values and status information to networked devices. During standard operation, malfunction, maintenance or configuration via the network, this allows a precise display of the current status. In case of error, the ACT20C supplies precise information for error analysis and can therefore contribute to higher system availability.

ACT20C-AI-AO-MTCP

Weidmüller Interfaces GmbH & Co. KG

Postfach 3030

32760 Detmold

Tel. +49 5231 14-0

Fax. +49 5231 14-2083

info@weidmueller.com

www.weidmueller.com

Technische Daten

Approvals

Approvals



Approvals

DNVGL;

ROHS

Conform

Downloads

Approval/Certificate/Document of
Conformity

[Declaration of Conformity](#)

Engineering Data

[CAD data – STEP](#)

Engineering Data

[WSCAD, EPLAN](#)

Software

[Runtime Software – WI-Manager, DTM-Library for online installation](#)
[Release notes for Weidmueller FDT-DTM Software version](#)

User Documentation

[Manual](#)
[Instruction sheet](#)

Catalogues

[Catalogues in PDF-format](#)

Brochures

ACT20C-AI-AO-MTCP

Weidmüller Interfaces GmbH & Co. KG

Postfach 3030

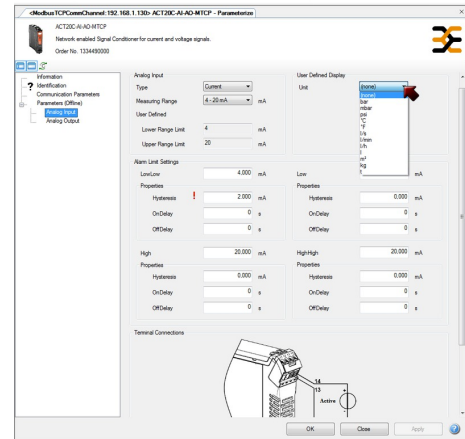
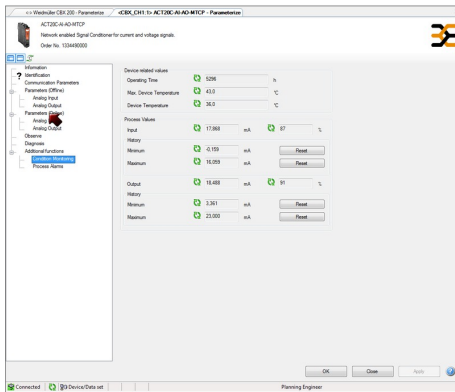
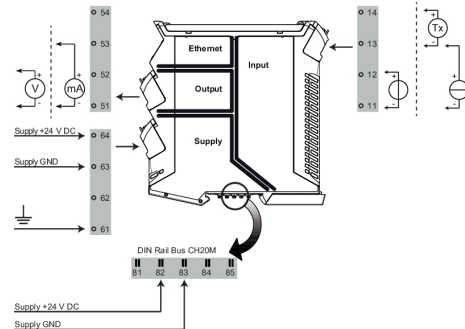
32760 Detmold

Tel. +49 5231 14-0

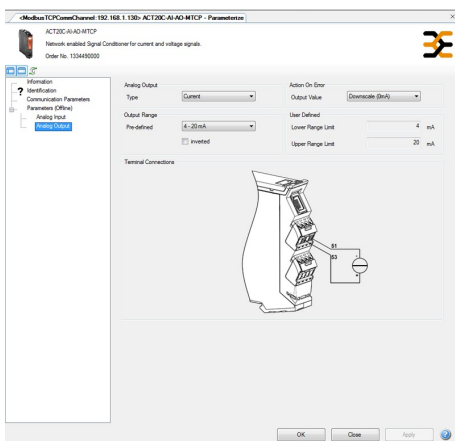
Fax. +49 5231 14-2083

Zeichnungen

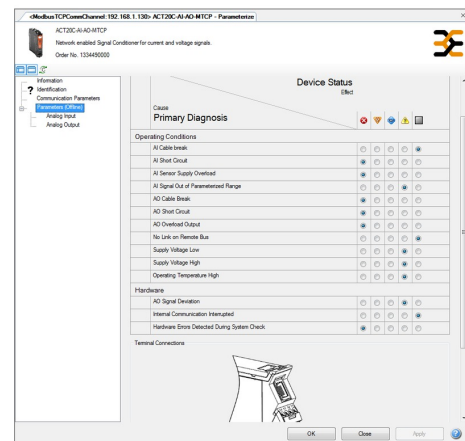
Connection diagram info@weidmueller.com



Screenshot configuration with FDT/DTM example for input



Screenshot configuration with FDT/DTM example for output



Screenshot configuration with FDT/DTM example for diagnosis

ACT20C-AI-AO-MTCP

Weidmüller Interfaces GmbH & Co. KG

Postfach 3030

32760 Detmold

Tel. +49 5231 14-0

Fax. +49 5231 14-2083

info@weidmueller.com

Zeichnungen

