

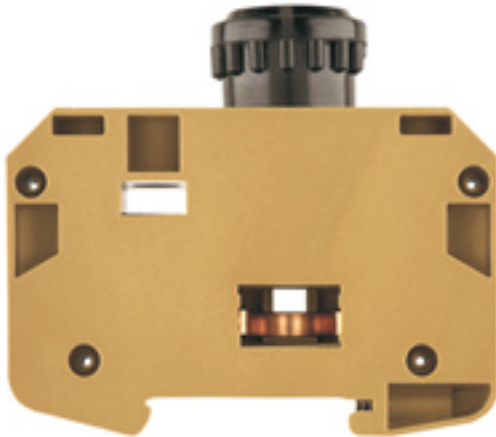
**SAKS 2/35****Weidmüller Interface GmbH & Co. KG**

Klingenbergstraße 26

D-32758 Detmold

Germany

www.weidmueller.com

**Product image**

In some applications it is useful to protect the feed through connection with a separate fuse. Fuse terminal blocks are made up of one terminal block bottom section with a fuse insertion carrier. The fuses vary from pivoting fuse levers and pluggable fuse holders to screwable closures and flat plug-in fuses.

**General ordering data**

Version	SAK Series, Fuse terminal, Rated cross-section: 10 mm <sup>2</sup> , Screw connection, medium yellow, Direct mounting
Order No.	<a href="#">1368720000</a>
Type	SAKS 2/35
GTIN (EAN)	4008190047818
Qty.	20 pc(s).

Creation date March 6, 2023 2:22:14 PM CET

Catalogue status 18.02.2023 / We reserve the right to make technical changes.

## SAKS 2/35

Weidmüller Interface GmbH &amp; Co. KG

Klingenbergstraße 26

D-32758 Detmold

Germany

www.weidmueller.com

## Technical data

## Dimensions and weights

Depth	73.5 mm	Depth (inches)	2.894 inch
Depth including DIN rail	75 mm	Height	80 mm
Height (inches)	3.15 inch	Width	27.6 mm
Width (inches)	1.087 inch	Net weight	110.85 g

## Temperatures

Storage temperature	-25 °C...55 °C	Continuous operating temp., min.	-60 °C
Continuous operating temp., max.	130 °C		

## Material data

Material	KrG	Colour	medium yellow
UL 94 flammability rating	V-0, 5VA		

## System specifications

Version	Screw connection, Fuse cartridge, for screwable cross-connection, One end without connector	End cover plate required	No
Number of potentials	1	Number of levels	1
Number of clamping points per level	2	Number of potentials per tier	1
Levels cross-connected internally	No	PE connection	No
Rail	TS 35	N-function	No
PE function	No	PEN function	No

## Additional technical data

Explosion-tested version	No	Installation advice	Direct mounting
Number of similar terminals	1	Open sides	closed
Type of mounting	Snap-on		

## CSA rating data

Certificate No. (CSA)	12400-194	Current size B (CSA)	25 A
Current size C (CSA)	25 A	Current size D (CSA)	5 A
Voltage size B (CSA)	600 V	Voltage size C (CSA)	600 V
Voltage size D (CSA)	600 V	Wire cross section max. (CSA)	8 AWG
Wire cross section min. (CSA)	22 AWG		

## Conductors for clamping (additional connection)

Conductor cross-section, flexible plus plastic collar DIN 46228/1, further connection, max.	10 mm <sup>2</sup>
---	--------------------

## SAKS 2/35

Weidmüller Interface GmbH &amp; Co. KG

Klingenbergstraße 26

D-32758 Detmold

Germany

www.weidmueller.com

## Technical data

## Conductors for clamping (rated connection)

Blade size	1.0 x 5.5 mm	Clamping range, max.	16 mm <sup>2</sup>
Clamping range, min.	0.33 mm <sup>2</sup>	Clamping screw	M 4
Connection cross-section, stranded, max.	10 mm <sup>2</sup>	Connection cross-section, stranded, min.	0.5 mm <sup>2</sup>
Connection direction	on side	Gauge to IEC 60947-1	B6
Number of connections	2	Stripping length	12 mm
Tightening torque, max.	2.4 Nm	Tightening torque, min.	1.2 Nm
Torque level with DMS electric screwdriver	4	Type of connection	Screw connection
Wire connection cross section AWG, max.	AWG 8	Wire connection cross section AWG, min.	AWG 22
Wire connection cross section, finely stranded, max.	10 mm <sup>2</sup>	Wire connection cross section, finely stranded, min.	0.5 mm <sup>2</sup>
Wire connection cross-section, finely stranded with wire-end ferrules DIN 46228/1, max.	10 mm <sup>2</sup>	Wire connection cross-section, finely stranded with wire-end ferrules DIN 46228/1, min.	0.5 mm <sup>2</sup>
Wire connection cross-section, solid core, max.	16 mm <sup>2</sup>	Wire connection cross-section, solid core, min.	0.5 mm <sup>2</sup>

## Display element

Operating voltage for display, max.	500 V	Type of voltage for indicator	AC/DC
-------------------------------------	-------	-------------------------------	-------

## Fuse terminals

Cartridge fuse	E16	Display	Without LED
Fuse holder (cartridge holder)	for screw fixing	Operating voltage, max.	500 V
Type of voltage for indicator	AC/DC		

## General

Installation advice	Direct mounting	Rail	TS 35
Standards	IEC 60947-7-3	Wire connection cross section AWG, max.	AWG 8
Wire connection cross section AWG, min.	AWG 22		

## Rating data

Rated cross-section	10 mm <sup>2</sup>	Rated voltage	500 V
Rated current	10 A	Current at maximum wires	10 A
Standards	IEC 60947-7-3	Volume resistance according to IEC 60947-7-x	0.56 mΩ
Rated impulse withstand voltage	6 kV	Power loss in accordance with IEC 60947-7-x	1.82 W
Pollution severity	3		

## Classifications

ETIM 6.0	EC000899	ETIM 7.0	EC000899
ETIM 8.0	EC000899	ECLASS 9.0	27-14-11-16
ECLASS 9.1	27-14-11-16	ECLASS 10.0	27-14-11-16
ECLASS 11.0	27-14-11-16	ECLASS 12.0	27-14-11-16

Creation date March 6, 2023 2:22:14 PM CET

Catalogue status 18.02.2023 / We reserve the right to make technical changes.

3

**SAKS 2/35**

**Weidmüller Interface GmbH & Co. KG**  
 Klingenbergstraße 26  
 D-32758 Detmold  
 Germany

www.weidmueller.com

**Technical data**

**Important note**

Product information The voltage depends on the selected fuse element or the selected indicator light

**Approvals**

Approvals



ROHS Conform

**Downloads**

Approval/Certificate/Document of Conformity	<a href="#">EAC certificate</a> <a href="#">DNVGL certificate</a> <a href="#">Declaration of Conformity</a> <a href="#">CE Declaration of Conformity all terminals</a> <a href="#">UKCA declaration of conformity</a>
Engineering Data	<a href="#">CAD data – STEP</a>
Engineering Data	<a href="#">WSCAD, Zuken E3.S</a>
User Documentation	<a href="#">StorageConditionsTerminalBlocks</a>
Catalogues	<a href="#">Catalogues in PDF-format</a>