

ACT20P-CMT-60-AO-RC-S

Weidmüller Interface GmbH & Co. KG
 Klingenbergstraße 26
 D-32758 Detmold
 Germany

www.weidmueller.com

Similar to illustration



ACT20P: The flexible solution

- Precise and highly functional signal converters
- Release levers simplify handling

General ordering data

Version	Current-measuring transducer, Limit value monitoring, Input : 0...40/50/60 A, Analogue output, Relay output, Current-carrying cable in feed-through hole
Order No.	1510440000
Type	ACT20P-CMT-60-AO-RC-S
GTIN (EAN)	4050118319620
Qty.	1 Stück

Erstellungs-Datum May 30, 2023 2:12:27 PM CEST

Katalogstand 26.05.2023 / Technische Änderungen vorbehalten

ACT20P-CMT-60-AO-RC-S

Weidmüller Interface GmbH & Co. KG
 Klingenbergstraße 26
 D-32758 Detmold
 Germany

www.weidmueller.com

Technische Daten

Dimensions and weights

Depth	113.6 mm	Depth (inches)	4.472 inch
Height	119.2 mm	Height (inches)	4.693 inch
Width	22.5 mm	Width (inches)	0.886 inch
Net weight	158 g		

Temperatures

Storage temperature	-40 °C...85 °C	Operating temperature	-25 °C...60 °C
Operating temperature, min.	-25 °C	Operating temperature, max.	60 °C
Humidity	5...95 %, no condensation		

Probability of failure

MTTF	158 a
------	-------

Input

Input frequency		Input measurement range	configurable, 0...40/50/60 A AC or DC, max. peak current $10 \times I_{Input}$ (1 s), max. continuous current $2 \times I_{Input}$. For DC current measurement (AA): Current direction display at the output (-/+ analog value)
	AC: 15...700 Hz (true root mean square)		
Input signal	Current-carrying cable in feed-through hole	Number of inputs	1

Output

Load impedance current	$\leq 600 \Omega$	Type	active, connected control must be passive
------------------------	-------------------	------	---

Output (digital)

Alarm function	Surge current, Under-current, Alarm delay: 0...10 s, Hysteresis 5% / 10%	Max. switching frequency	20 Hz
Max. switching voltage, AC	250 V	Max. switching voltage, DC	24 V
Number of digital outputs	1	Rated switching current	6 A
Type	Relay, 1 CO contact, normal / inverse adjustment		

Output (analogue)

Load resistance current	$\leq 600 \Omega$	Load resistance voltage	$\geq 10 \text{ k}\Omega$
Number of analogue outputs	1	Output current	Adjustable, 0...20 mA, 4...20 mA, -20...+20 mA
Output voltage	Adjustable, 0...10 V, 2...10 V, 0...5 V, 1...5 V, -5...+5 V, -10...+10 V	Transmit function	direct or inverted
Type (analogue output)	'active', 'connected control must be passive'		

ACT20P-CMT-60-AO-RC-S

Weidmüller Interface GmbH & Co. KG
 Klingenbergstraße 26
 D-32758 Detmold
 Germany

www.weidmueller.com

Technische Daten

General data

Accuracy	< 0.75 % FSR, < 1.5 % FSR with measurement range 50/60 A AC	Configuration	DIP switch and potentiometer
Galvanic isolation	4-way isolator, between input / output / supply / relay	Power consumption, max.	2.2 W
Rail	TS 35	Step response time	≤ 300 ms (RMS), ≤ 60 ms (AA)
Temperature coefficient	0.01%/K @ 0...40 A, 0.10%/K @ 40...55 A, 0.30%/K @ 55...60 A	Voltage supply	16,8 V...31,2 V

Insulation coordination

EMC standards	IEC 61326-1, IEC 61010-2-201	Galvanic isolation	4-way isolator, between input / output / supply / relay
Impulse withstand voltage	6.4 kV (1.2/50 μs)	Insulation voltage	4 kV _{eff} / 1 min.
Pollution severity	2	Rated voltage	300 V AC _{rms}
Surge voltage category	III	Test voltage	4 kV

Connection data

Type of connection	Screw connection	Tightening torque, min.	0.4 Nm
Tightening torque, max.	0.6 Nm	Clamping range, rated connection	1.5 mm ²
Clamping range, min.	0.5 mm ²	Clamping range, max.	2.5 mm ²
Wire connection cross section AWG, min.	AWG 26	Wire connection cross section AWG, max.	AWG 12

Classifications

ETIM 6.0	EC002475	ETIM 7.0	EC002475
ETIM 8.0	EC002475	ECLASS 9.0	27-21-01-23
ECLASS 9.1	27-21-01-23	ECLASS 10.0	27-21-01-23
ECLASS 11.0	27-21-01-23	ECLASS 12.0	27-21-01-23

Environmental Product Compliance

REACH SVHC	Lead 7439-92-1
SCIP	2f6dd957-421a-46db-a0c2-cf1609156924

Important note

Product information	<p>The ACT20P-CMT-XX-(AO)-RC-S series of devices measure and monitor AC and DC currents of up to 60 A. The real effective value method used allows for precise measurement, even for distorted current curve shapes. The devices feature integrated limit value monitoring with an adjustable switching threshold, delay and hysteresis, as well as a relay output.</p> <p>Features</p> <ul style="list-style-type: none"> • Real effective value measurement (True RMS) or arithmetic averaging (AA) measurement and contactless through-hole technology • Limit value monitoring for overcurrent or undercurrent • Relay output by means of the open-circuit / closed-circuit principle • Adjustable trigger delay for filtering current peaks • Operational status and error display on a front panel LED and output signalling according to NE43, NE44, NE107 • Galvanic four-way insulation for secure isolation according to IEC/EN 61010-2-201
---------------------	---

ACT20P-CMT-60-AO-RC-S

Weidmüller Interface GmbH & Co. KG
Klingenbergstraße 26
D-32758 Detmold
Germany

www.weidmueller.com

Technische Daten

Approvals

Approvals



ROHS	Conform
UL File Number Search	UL Website
Certificate no. (cULus)	E141197

Downloads

Approval/Certificate/Document of Conformity	Certification DNV GL Declaration of Conformity
Engineering Data	CAD data – STEP
Engineering Data	WSCAD, EPLAN
Software	Runtime Software – DIP switch configuration tool
User Documentation	Instruction sheet
Catalogues	Catalogues in PDF-format
Brochures	

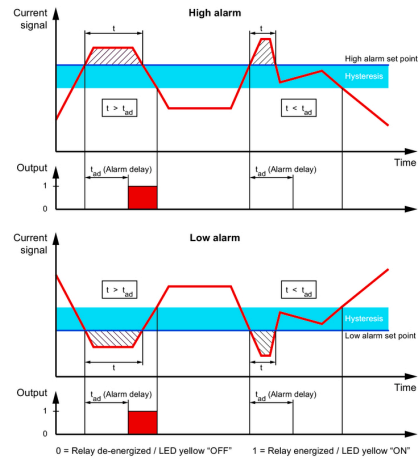
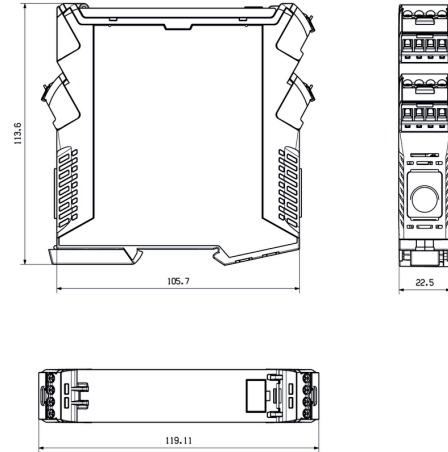
ACT20P-CMT-60-AO-RC-S

Weidmüller Interface GmbH & Co. KG
 Klingenbergstraße 26
 D-32758 Detmold
 Germany

www.weidmueller.com

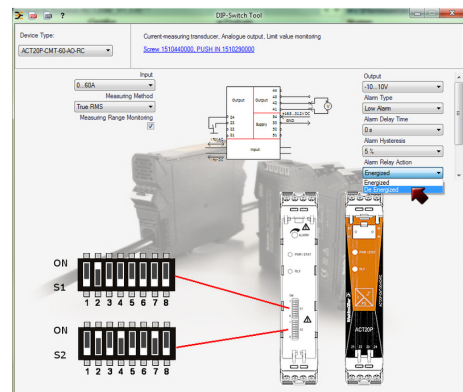
Zeichnungen

Dimensioned drawing



Configuration

DIP switch S1		DIP switch S2	
Current input range	1 2 3 4 5 6 7 8	Output range	1 2 3 4 5 6 7 8
0...40 A	<input type="checkbox"/>	0...10 V	<input type="checkbox"/>
0...50 A	<input checked="" type="checkbox"/>	2...10 V	<input checked="" type="checkbox"/>
0...60 A	<input type="checkbox"/>	0...5 V	<input type="checkbox"/>
Measuring method	1 2 3 4 5 6 7 8	1...5 V	<input checked="" type="checkbox"/>
True RMS	<input type="checkbox"/>	-5...+5 V	<input type="checkbox"/>
Arithmetic average	<input checked="" type="checkbox"/>	-10...+10 V	<input type="checkbox"/>
Alarm delay time	1 2 3 4 5 6 7 8	0...20 mA	<input checked="" type="checkbox"/>
0 s	<input type="checkbox"/>	4...20 mA	<input checked="" type="checkbox"/>
2 s	<input type="checkbox"/>	-20...+20 mA	<input type="checkbox"/>
5 s	<input checked="" type="checkbox"/>	Alarm relay action	1 2 3 4 5 6 7 8
10 s	<input type="checkbox"/>	Energized	<input type="checkbox"/>
Measuring range monitoring	1 2 3 4 5 6 7 8	De-energized	<input checked="" type="checkbox"/>
Yes	<input type="checkbox"/>	Alarm hysteresis	1 2 3 4 5 6 7 8
No	<input checked="" type="checkbox"/>	5 %	<input type="checkbox"/>
Output error action	1 2 3 4 5 6 7 8	10 %	<input checked="" type="checkbox"/>
Upscale	<input type="checkbox"/>	Alarm type	1 2 3 4 5 6 7 8
Downscale	<input checked="" type="checkbox"/>	High alarm	<input type="checkbox"/>
Transfer function	1 2 3 4 5 6 7 8	Low alarm	<input checked="" type="checkbox"/>
Normal	<input type="checkbox"/>		
Inverse	<input checked="" type="checkbox"/>		



example for DIP switch setting (with ACT20 tool)

ACT20P-CMT-60-AO-RC-S

Weidmüller Interface GmbH & Co. KG
 Klingenbergstraße 26
 D-32758 Detmold
 Germany

www.weidmueller.com

Zeichnungen

