

CLI C 02-3 VI/WS 7 CD

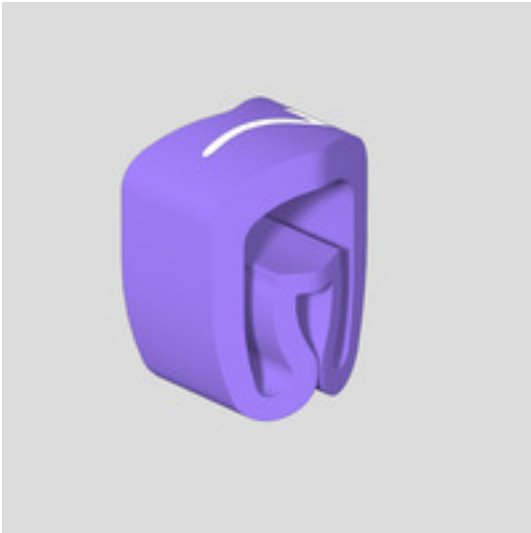
Weidmüller Interface GmbH & Co. KG

Klingenbergstraße 26

D-32758 Detmold

Germany

www.weidmueller.com



CLI C conductor markers are mounted on unconnected conductors. Four different sizes are available for labelling conductor cross-sections from 0.5 mm² to max. 70 mm². The markers are already printed and ready for use. Individual labelling is possible by combining the individual markers.

- Closed markers, reliable and for mounting on unconnected cables
- A special flexible bellow profile ensures a wide application range
- Fast and easy to fit – with minimal effort
- Corresponding accessories make labelling easy
- Permanent, high-quality labelling
- High contrast for optimum legibility

General ordering data

Version	CableLine, Conductor and cable markers, 1.3 - 3 mm, 3 x 3.4 mm, violet
Order No.	1568241524
Type	CLI C 02-3 VI/WS 7 CD
GTIN (EAN)	4032248261697
Qty.	500 Stück

Erstellungs-Datum May 16, 2023 1:23:17 PM CEST

Katalogstand 12.05.2023 / Technische Änderungen vorbehalten

CLI C 02-3 VI/WS 7 CD

Weidmüller Interface GmbH & Co. KG
 Klingenbergstraße 26
 D-32758 Detmold
 Germany

www.weidmueller.com

Technische Daten

Dimensions and weights

Depth	3.5 mm	Depth (inches)	0.138 inch
Height	3 mm	Height (inches)	0.118 inch
Width	3.4 mm	Width (inches)	0.134 inch
Net weight	0.062 g		

Temperatures

Operating temperature range	-30...80 °C
-----------------------------	-------------

General data

Colour	violet	Colour of printing	white
Halogen	Yes	Material	PVC, soft, without Cadmium
Material colour according to resistance code	7	Number of markers per combination	1 Reel = Conductor and cable markers
Operating temperature range	-30...80 °C	Operating temperature range, max.	80 °C
Operating temperature range, min.	-30 °C	Orientation of print	horizontal
Printed characters	Numbers	Printing	7
Printing method	hot-embossing	Recommended industries	Process, Machinery
Type of printing	Standard	UL 94 flammability rating	V-0
Version	CD	Width	3.4 mm

Conductor and cable markers

Conductor O.D.	1.3 - 3 mm	Conductor O.D., max.	3 mm
Conductor O.D., min.	1.3 mm	Conductor cross-section, max.	1.5 mm ²
Conductor cross-section, min.	0.2 mm ²	Cross-section for connected wire	0.2 - 1.5 mm ²
Halogen	Yes		

Classifications

ETIM 6.0	EC001530	ETIM 7.0	EC001530
ETIM 8.0	EC001530	ECLASS 9.0	27-40-04-01
ECLASS 9.1	27-40-04-01	ECLASS 10.0	27-40-04-01
ECLASS 11.0	27-28-11-02	ECLASS 12.0	27-28-11-02

Approvals

ROHS	Conform
------	---------

Downloads

Engineering Data	WSCAD, EPLAN
Product Change Notification	PCN CableLine_DE PCN CableLine_EN
Catalogues	Catalogues in PDF-format