

CLI C 2-4 VI/WS 7 CD

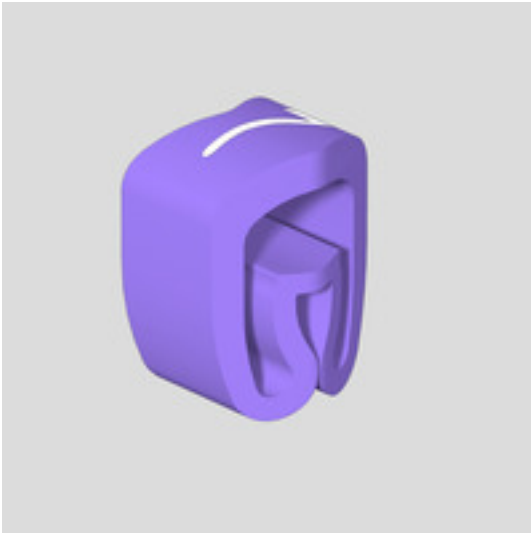
Weidmüller Interface GmbH & Co. KG

Klingenbergstraße 26

D-32758 Detmold

Germany

www.weidmueller.com



CLI C conductor markers are mounted on unconnected conductors. Four different sizes are available for labelling conductor cross-sections from 0.5 mm² to max. 70 mm². The markers are already printed and ready for use. Individual labelling is possible by combining the individual markers.

- Closed markers, reliable and for mounting on unconnected cables
- A special flexible bellows profile ensures a wide application range
- Fast and easy to fit – with minimal effort
- Corresponding accessories make labelling easy
- Permanent, high-quality labelling
- High contrast for optimum legibility

General ordering data

Version	CableLine, Conductor and cable markers, 4 - 10 mm, 4 x 7 mm, violet
Order No.	1568261524
Type	CLI C 2-4 VI/WS 7 CD
GTIN (EAN)	4008 1909 1625 1
Qty.	250 Stück

Erstellungs-Datum May 16, 2023 2:41:26 PM CEST

Katalogstand 12.05.2023 / Technische Änderungen vorbehalten

CLI C 2-4 VI/WS 7 CD

Weidmüller Interface GmbH & Co. KG

Klingenbergstraße 26

D-32758 Detmold

Germany

www.weidmueller.com

Technische Daten

Dimensions and weights

Depth	8 mm	Depth (inches)	0.315 inch
Height	4 mm	Height (inches)	0.157 inch
Width	7 mm	Width (inches)	0.276 inch
Net weight	0.214 g		

Temperatures

Operating temperature range	-30...80 °C
-----------------------------	-------------

General data

Colour	violet	Colour of printing	white
Halogen	Yes	Insulation cross-section, max.	10
Material	PVC, soft, without Cadmium	Material colour according to resistance code	7
Number of markers per combination	1 Reel = Conductor and cable markers	Operating temperature range	-30...80 °C
Operating temperature range, max.	80 °C	Operating temperature range, min.	-30 °C
Orientation of print	horizontal	Printed characters	Numbers
Printing	7	Printing method	hot-embossing
Recommended industries	Process, Machinery	Type of printing	Standard
UL 94 flammability rating	V-0	Version	CD
Width	7 mm		

Conductor and cable markers

Conductor O.D.	4 - 10 mm	Conductor O.D., max.	10 mm
Conductor O.D., min.	4 mm	Conductor cross-section, max.	16 mm ²
Conductor cross-section, min.	2.5 mm ²	Cross-section for connected wire	2.5 - 16 mm ²
Halogen	Yes		

Classifications

ETIM 6.0	EC001530	ETIM 7.0	EC001530
ETIM 8.0	EC001530	ECLASS 9.0	27-40-04-01
ECLASS 9.1	27-40-04-01	ECLASS 10.0	27-40-04-01
ECLASS 11.0	27-28-11-02	ECLASS 12.0	27-28-11-02

Approvals

ROHS	Conform
------	---------

Downloads

Engineering Data	WSCAD, EPLAN
Product Change Notification	PCN CableLine_DE PCN CableLine_EN
Catalogues	Catalogues in PDF-format