

HDC 48A SLU 1PG29G

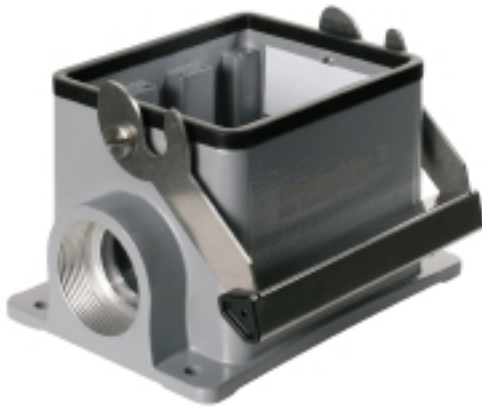
Weidmüller Interface GmbH & Co. KG

Klingenbergstraße 26

D-32758 Detmold

Germany

www.weidmueller.com



The special die-cast alloy and the multi-layered surface sealing provide complete protection for the HDC housings.

The cleverly designed interlock system is manufactured from stainless steel. This guarantees a long lifespan with high resistance to corrosion and impact.

The housing interlock system provides integrated safety. Our unique, patented spring system provides the housing interlock with a secure grip and prevents accidental opening.

The laser marking allows for easy and quick identification. Each housing is permanently labelled with a laser marking so that each product can be quickly designated and positioned.

Weidmüller RockStar® IP 65 / NEMA Type 4X housings - your first choice for industrial housings with IP 65 protection.

General ordering data

Version	HDC enclosures, Size: 9, Protection degree: IP65 (in plugged condition), Base housing, End-locking clamp, lower side, Standard, Size of cable entries: PG 29
Order No.	1666770000
Type	HDC 48A SLU 1PG29G
GTIN (EAN)	4008190423889
Qty.	1 pc(s).

HDC 48A SLU 1PG29G

Weidmüller Interface GmbH & Co. KG

Klingenbergstraße 26

D-32758 Detmold

Germany

www.weidmueller.com

Technical data

Dimensions and weights

Height	79 mm	Height (inches)	3.11 inch
Width	121.5 mm	Width (inches)	4.783 inch
Mounting dimension - height	67 mm	Mounting dimension - width	112 mm
Net weight	639 g		

Temperatures

Limit temperature	-40 °C ... 125 °C
-------------------	-------------------

Dimensions

Cable entry	w. thread	Height of base B1	5 mm
Height of housing B	79 mm	Hole pitch length A2	112 mm
Total length housing	94 mm	Width base C1	92.5 mm
Width housing C	82.5 mm		

General data

EMC housings	No	Housing main material	diecast aluminium
Material of locking element	Stainless steel, rust-proof	Protection degree	IP65 (in plugged condition)
Surface finish	Powder coating	Tightening torque	2 Nm

Version

BG	9	Cable entry	w. thread
Clamp version	End-locking clamp	Colour (RAL)	RAL 7035
Design	Standard	Design of housing	Base housing
Design of locking system	End-locking clamp, lower side	Internal thread	PG 29
Number of cable entry on top	0	Number of cable entry sideways	1
Sealing	NBR	Size	9
Size of cable entries	PG 29	Suitable for ModuPlug®	No
Tightening torque	2 Nm	Top part/bottom part/lid	lower part
Type	Base housing		

Classifications

ETIM 6.0	EC000437	ETIM 7.0	EC000437
ETIM 8.0	EC000437	ECLASS 9.0	27-44-02-02
ECLASS 9.1	27-44-02-02	ECLASS 10.0	27-44-02-02
ECLASS 11.0	27-44-02-02	ECLASS 12.0	27-44-02-02

Substance	Acetone
Chemical resistance	Conditionally resistant
Substance	Drilling oil
Chemical resistance	Resistant
Substance	Diesel
Chemical resistance	Resistant
Substance	Ethyl alcohol
Chemical resistance	Resistant

Creation date February 27, 2023 4:54:49 PM CET

Catalogue status 18.02.2023 / We reserve the right to make technical changes.

HDC 48A SLU 1PG29G

Weidmüller Interface GmbH & Co. KG

Klingenbergstraße 26

D-32758 Detmold

Germany

www.weidmueller.com

Technical data

Substance	Transmission oil
Chemical resistance	Resistant
Substance	Hydraulic oil
Chemical resistance	Resistant
Substance	Coolant
Chemical resistance	Resistant
Substance	Petroleum benzine
Chemical resistance	Resistant
Substance	Sweat
Chemical resistance	Resistant
Substance	Premium gasoline
Chemical resistance	Conditionally resistant
Substance	Water
Chemical resistance	Resistant
Substance	UV
Chemical resistance	Unstable
Substance	Ozone
Chemical resistance	Unstable

Environmental Product Compliance

REACH SVHC	Lead 7439-92-1 Potassium perfluorobutane sulfonate 29420-49-3
SCIP	e98b2b24-ba23-41bf-8d19-0dda3647412f
Chemical resistance	de.myview.objectmodel.impl.BlockImpl@3ae2e9bc de.myview.objectmodel.impl.BlockImpl@78976e00 de.myview.objectmodel.impl.BlockImpl@40181924 de.myview.objectmodel.impl.BlockImpl@629d35b2 de.myview.objectmodel.impl.BlockImpl@4f9f8f54 de.myview.objectmodel.impl.BlockImpl@cbb0fc9 de.myview.objectmodel.impl.BlockImpl@c6af643 de.myview.objectmodel.impl.BlockImpl@75172d9 de.myview.objectmodel.impl.BlockImpl@3407a848 de.myview.objectmodel.impl.BlockImpl@60962c46 de.myview.objectmodel.impl.BlockImpl@3b9516f9 de.myview.objectmodel.impl.BlockImpl@375e7ce8 de.myview.objectmodel.impl.BlockImpl@3e12c7a3

Approvals

Approvals



ROHS	Conform
UL File Number Search	UL Website
Certificate No. (cURus)	E92202

HDC 48A SLU 1PG29G**Weidmüller Interface GmbH & Co. KG**

Klingenbergstraße 26

D-32758 Detmold

Germany

www.weidmueller.com**Technical data****Downloads**

Approval/Certificate/Document of Conformity	Manufacturer's declaration
Engineering Data	CAD data – STEP
Engineering Data	WSCAD
Product Change Notification	20220214 Technical change to HDC housings 20220214 Technische Änderung bei HDC-Gehäusen
Technical Documentation	1666770000_HDC_48A_SLU_1PG29G_STP_Blatt_1.pdf
Catalogues	Catalogues in PDF-format
Brochures	FL FIELDWIRING EN FL FIELDWIRING EN

Data sheet

HDC 48A SLU 1PG29G

Weidmüller Interface GmbH & Co. KG
Klingenbergstraße 26
D-32758 Detmold
Germany

www.weidmueller.com

Drawings

