

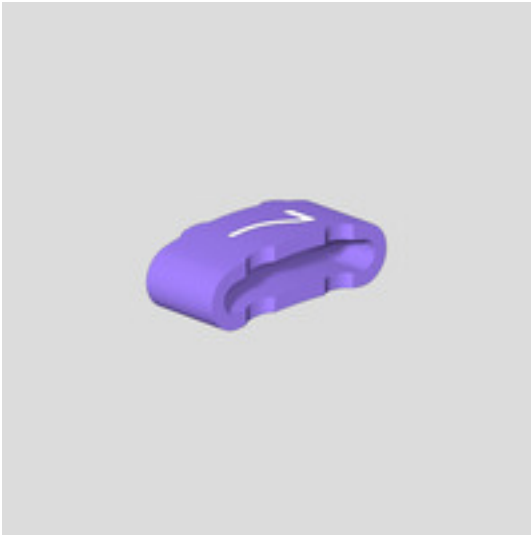
CLI M 2-4 VI/WS 7 MP**Weidmüller Interface GmbH & Co. KG**

Klingenbergstraße 26

D-32758 Detmold

Germany

www.weidmueller.com



CLI M identification markers are slid onto CLI MH carrier strips and secured by means of cable ties. The system is particularly suitable for large conductor and cable cross-sections.

Advantages:

- Combination marker for cable and pipe markers
- One size for all diameters above 16 mm²
- Unrestricted combination options
- Closed, permanently attached markers
- Very good legibility

General ordering data

Version	CableLine, Conductor and cable markers, 10 - 317 mm, 4 x 11.3 mm, violet
Order No.	1733651524
Type	CLI M 2-4 VI/WS 7 MP
GTIN (EAN)	4032248451166
Qty.	100 Stück

Erstellungs-Datum May 22, 2023 10:12:44 AM CEST

Katalogstand 12.05.2023 / Technische Änderungen vorbehalten

CLI M 2-4 VI/WS 7 MP

Weidmüller Interface GmbH & Co. KG

Klingenbergstraße 26

D-32758 Detmold

Germany

www.weidmueller.com

Technische Daten

Dimensions and weights

Depth	3 mm	Depth (inches)	0.118 inch
Height	4 mm	Height (inches)	0.157 inch
Width	11.3 mm	Width (inches)	0.445 inch
Net weight	0.12 g		

Temperatures

Operating temperature range	-30...80 °C
-----------------------------	-------------

General data

Colour	violet	Colour of printing	white
Halogen	Yes	Material	PVC, soft, without Cadmium
Material colour according to resistance code	7	Number of markers per combination	1 Component part = Conductor and cable markers
Operating temperature range	-30...80 °C	Operating temperature range, max.	80 °C
Operating temperature range, min.	-30 °C	Orientation of print	horizontal
Printed characters	Numbers	Printing	7
Printing method	hot-embossing	Recommended industries	Process, Machinery
Type of printing	Standard	UL 94 flammability rating	V-0
Version	MultiPack	Width	11.3 mm

Conductor and cable markers

Conductor O.D.	10 - 317 mm	Conductor O.D., max.	317 mm
Conductor O.D., min.	10 mm	Conductor cross-section, max.	500 mm ²
Conductor cross-section, min.	16 mm ²	Cross-section for connected wire	16 - 500 mm ²
Halogen	Yes		

Classifications

ETIM 6.0	EC001530	ETIM 7.0	EC001530
ETIM 8.0	EC001530	ECLASS 9.0	27-40-04-01
ECLASS 9.1	27-40-04-01	ECLASS 10.0	27-40-04-01
ECLASS 11.0	27-28-11-02	ECLASS 12.0	27-28-11-02

Approvals

ROHS	Conform
------	---------

Downloads

Engineering Data	WSCAD, EPLAN
Product Change Notification	PCN_CableLine_DE PCN_CableLine_EN
Catalogues	Catalogues in PDF-format